

# Definitions

- **Observing efficiency**

= Time for PI Science / (Total time - scheduled maintenance - commissioning - weather)

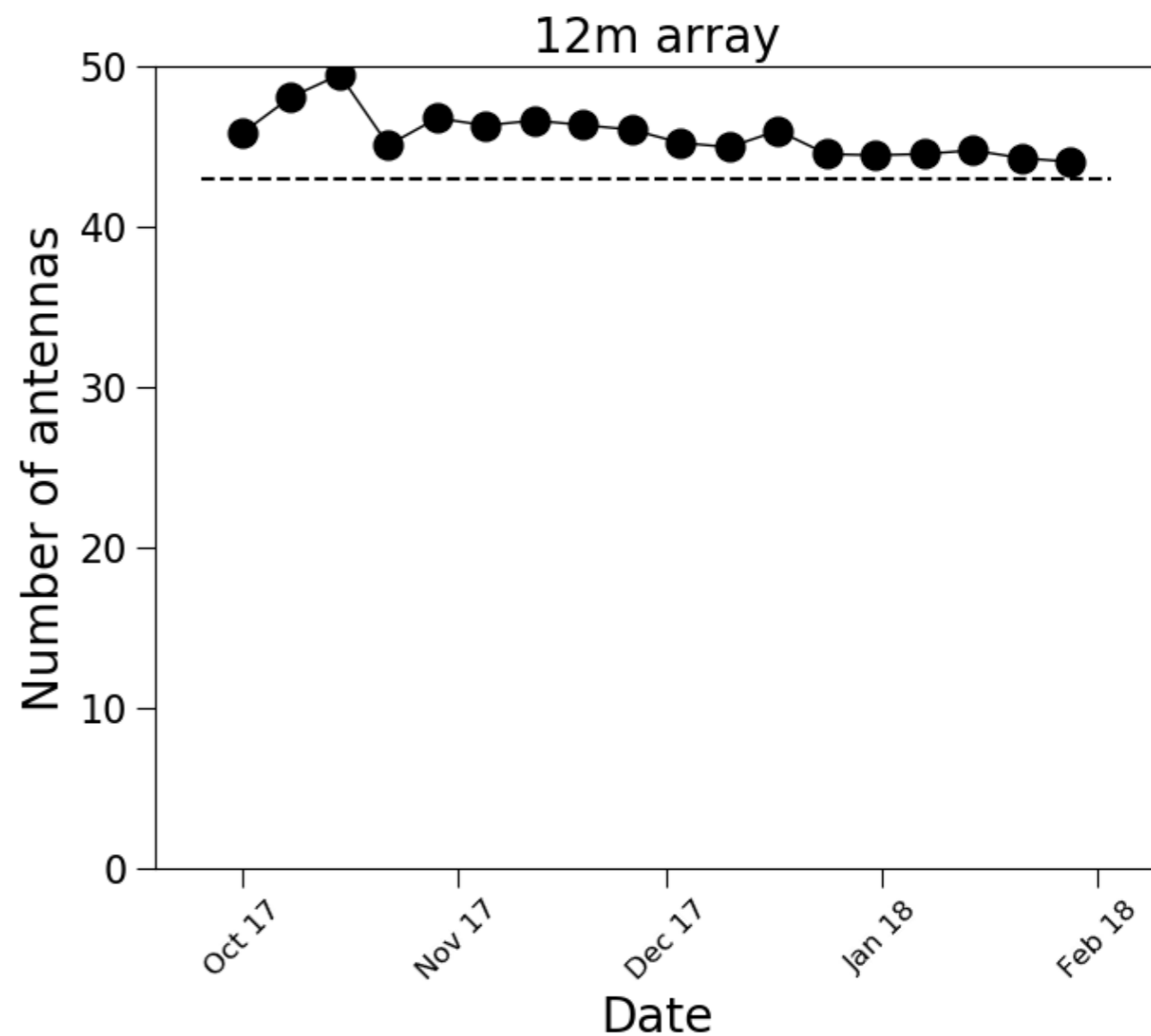
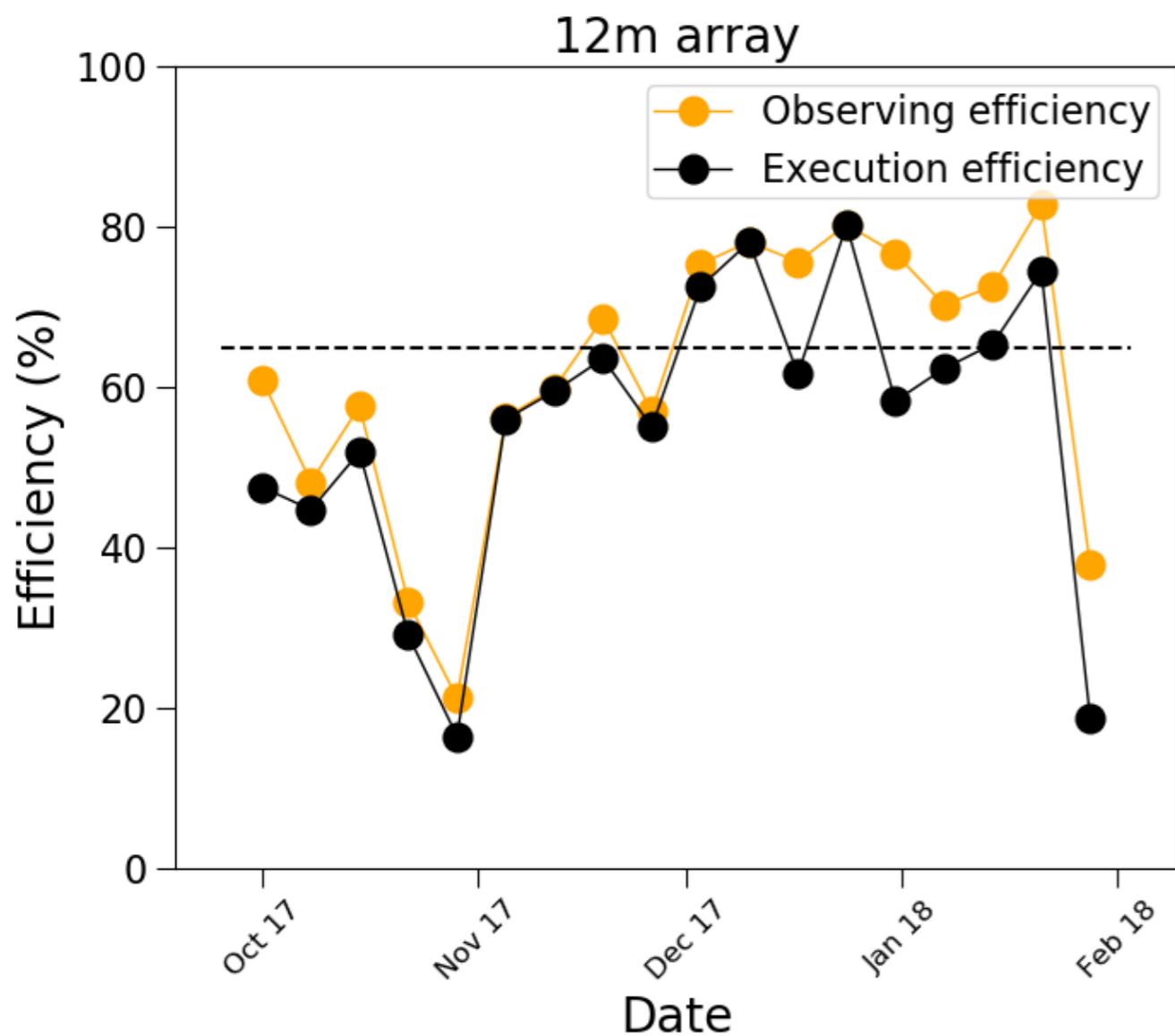
Array calibrations, technical downtime, and other downtime detract from observing efficiency

- **Execution efficiency**

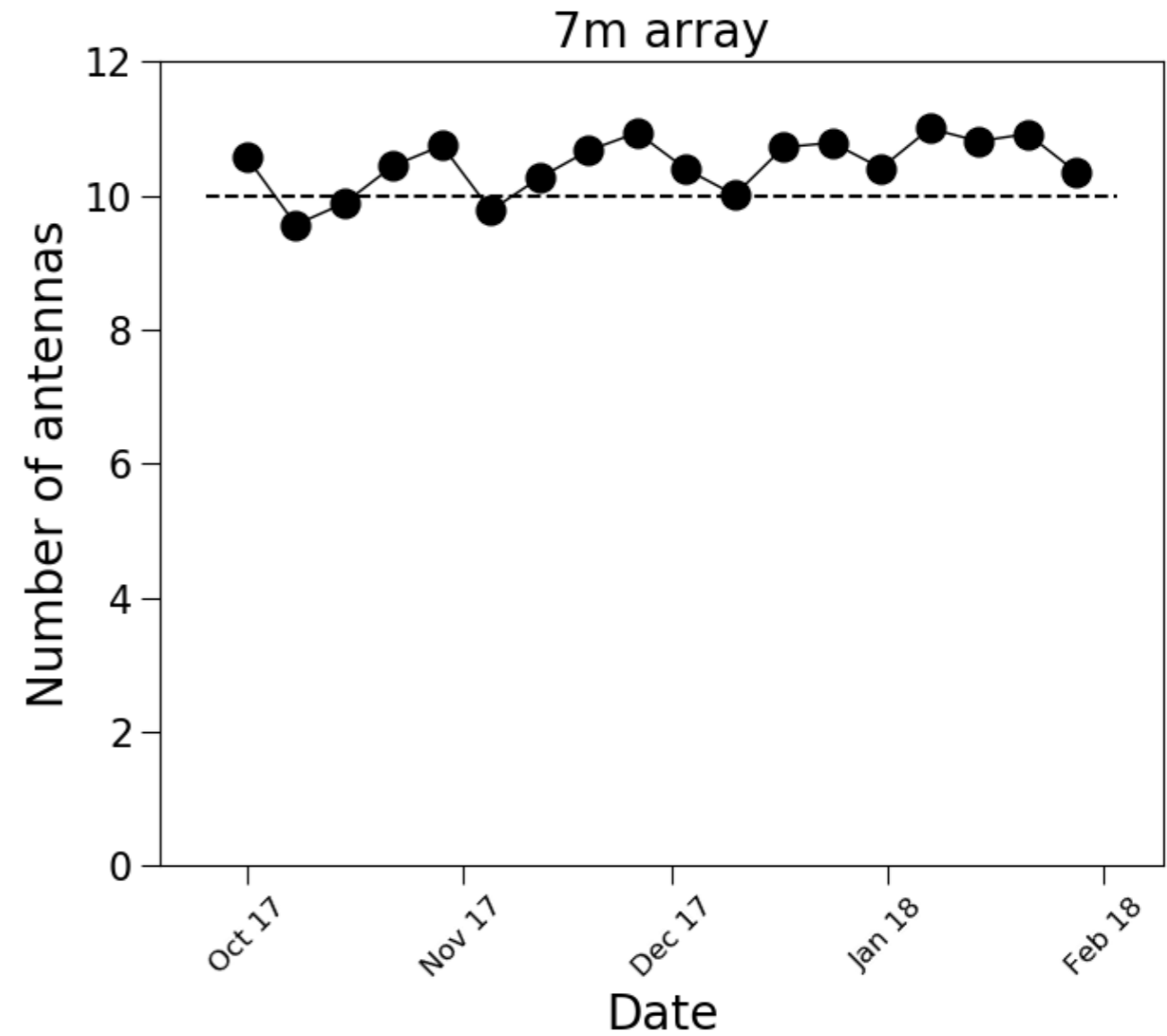
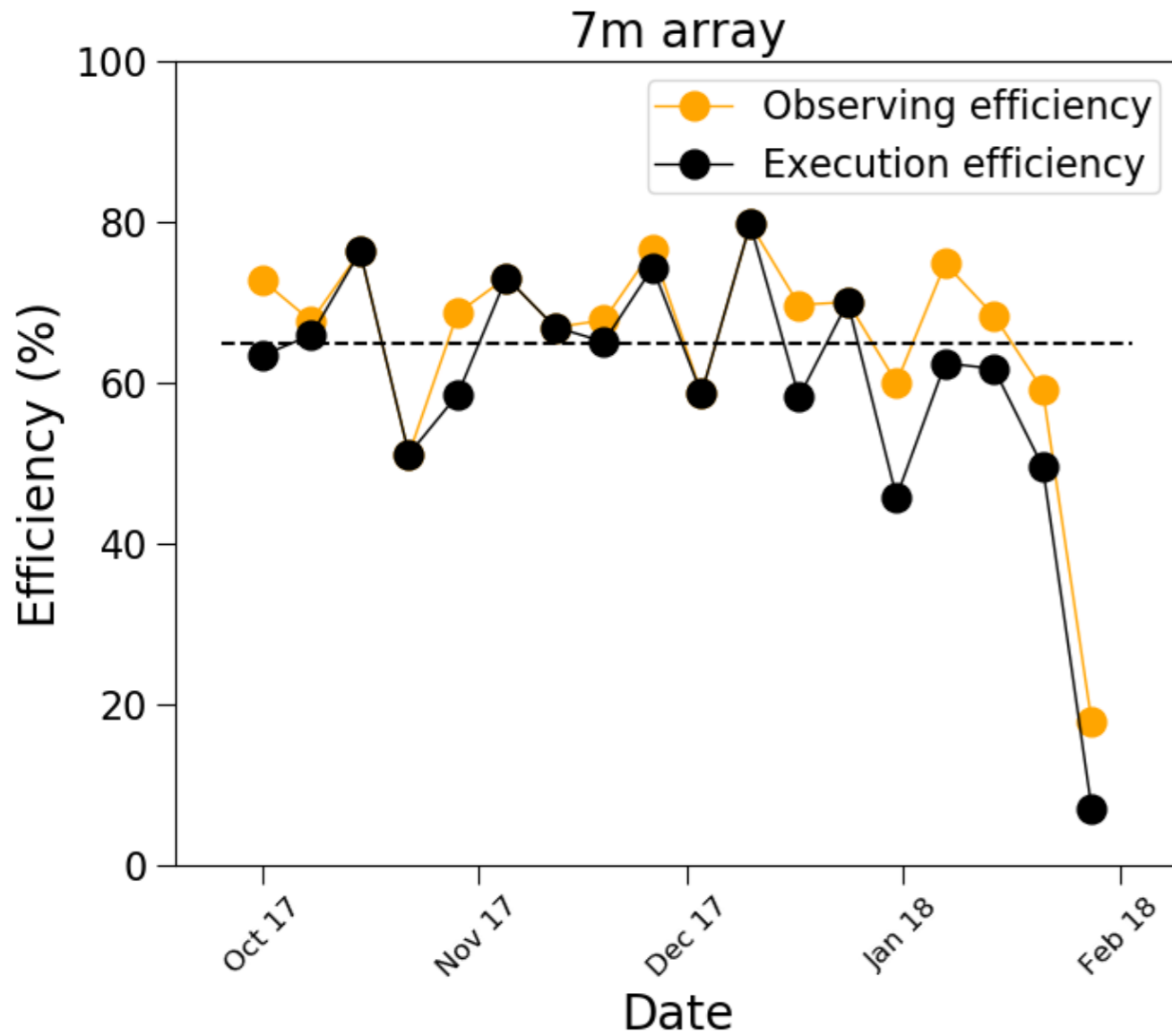
= Time for PI Science / (Total time - scheduled maintenance - commissioning)

Similar to observing efficiency, but includes weather downtime

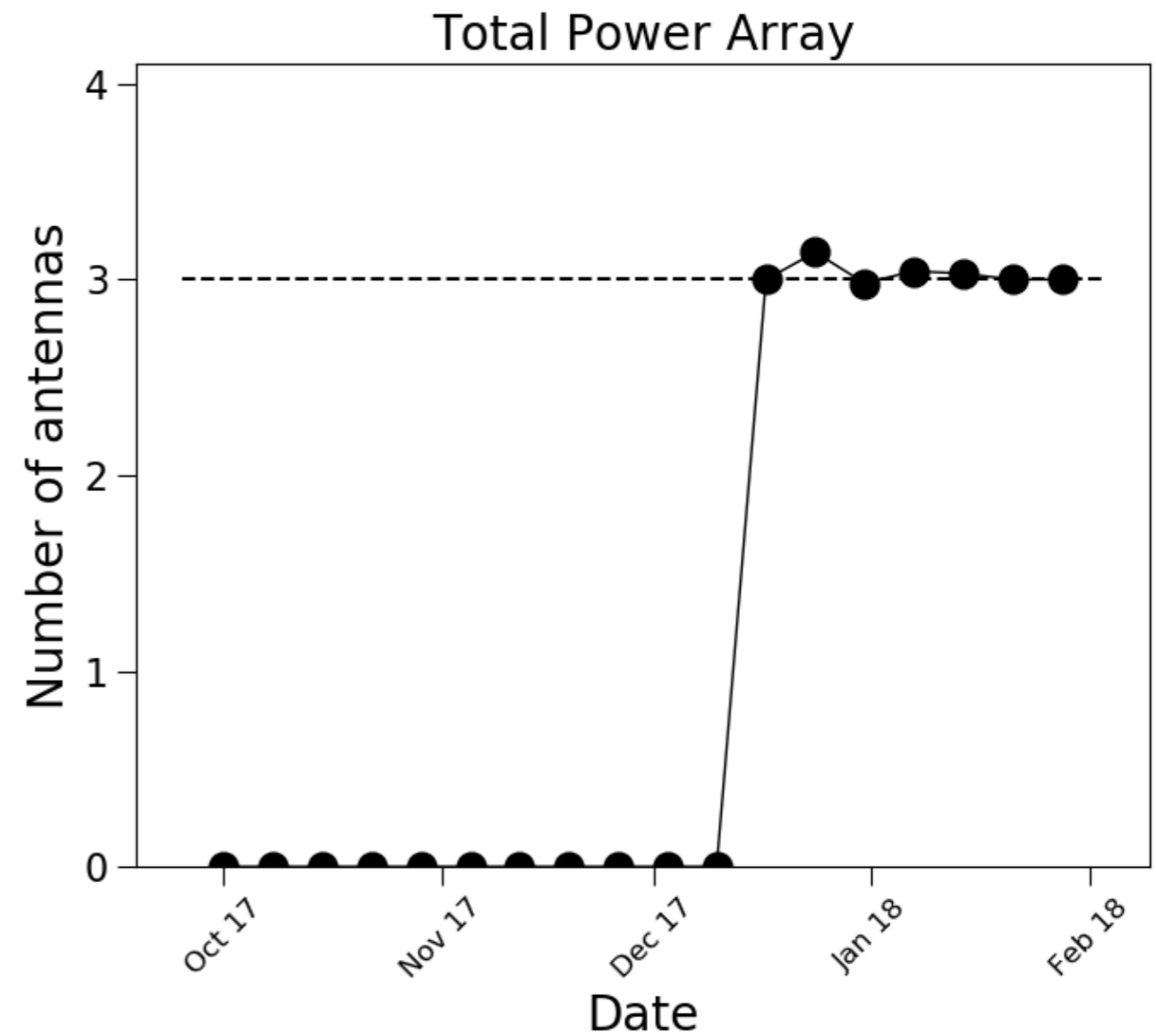
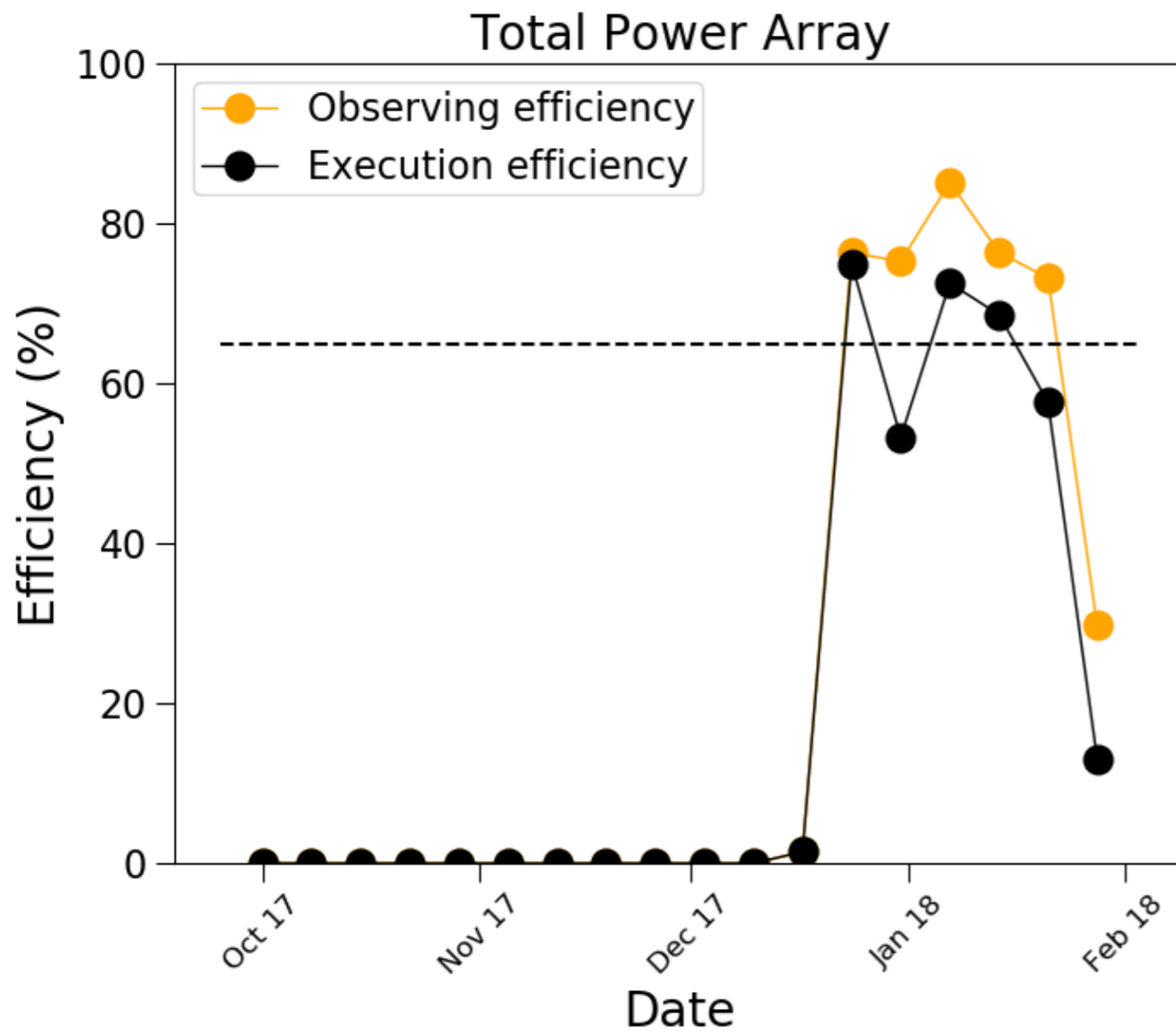
# Cycle 5 Efficiencies and 12-m Array Antenna Elements



# Cycle 5 7-m Array Antenna Elements

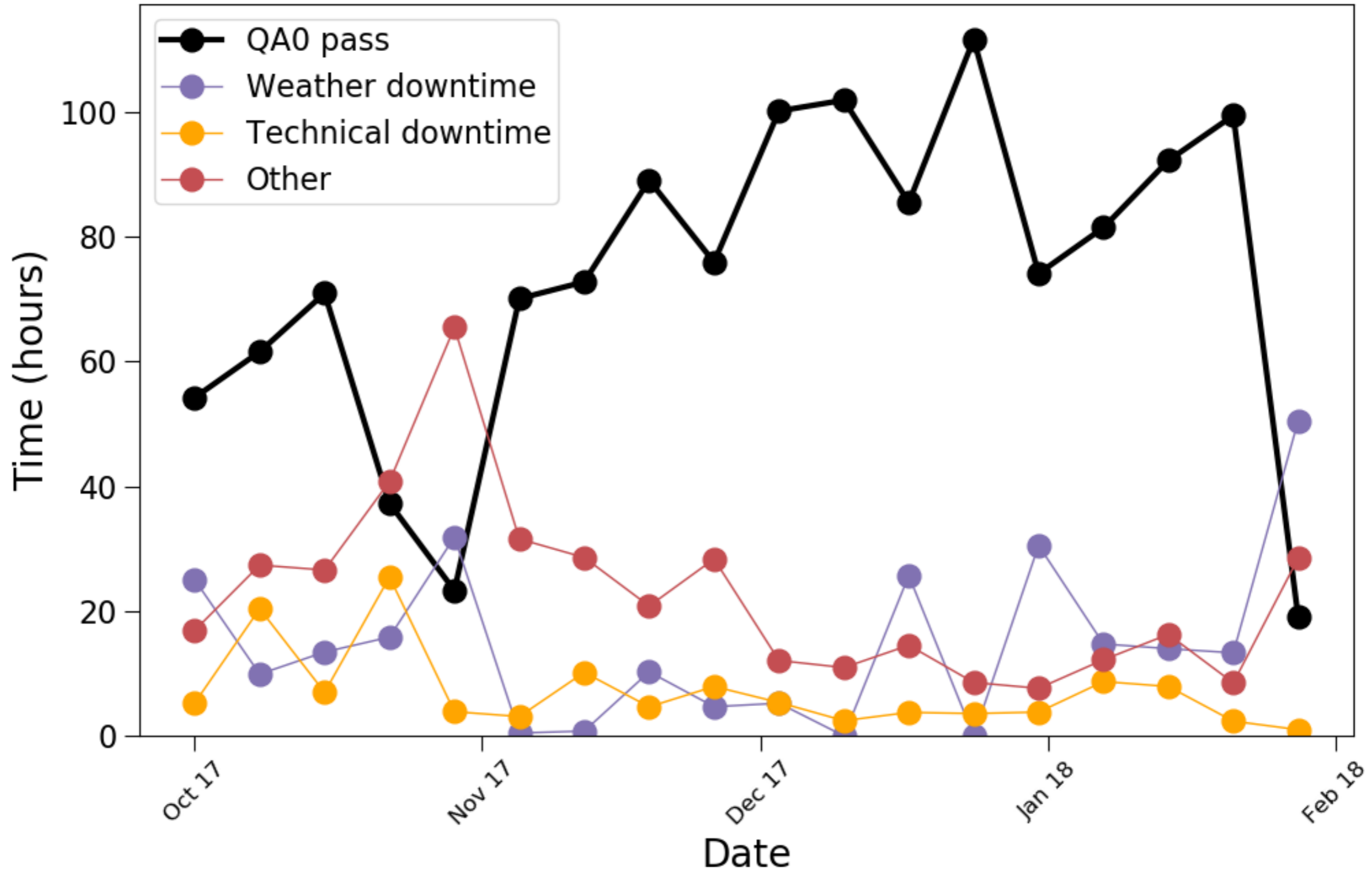


# Cycle 4 Total Power Array Antenna Elements

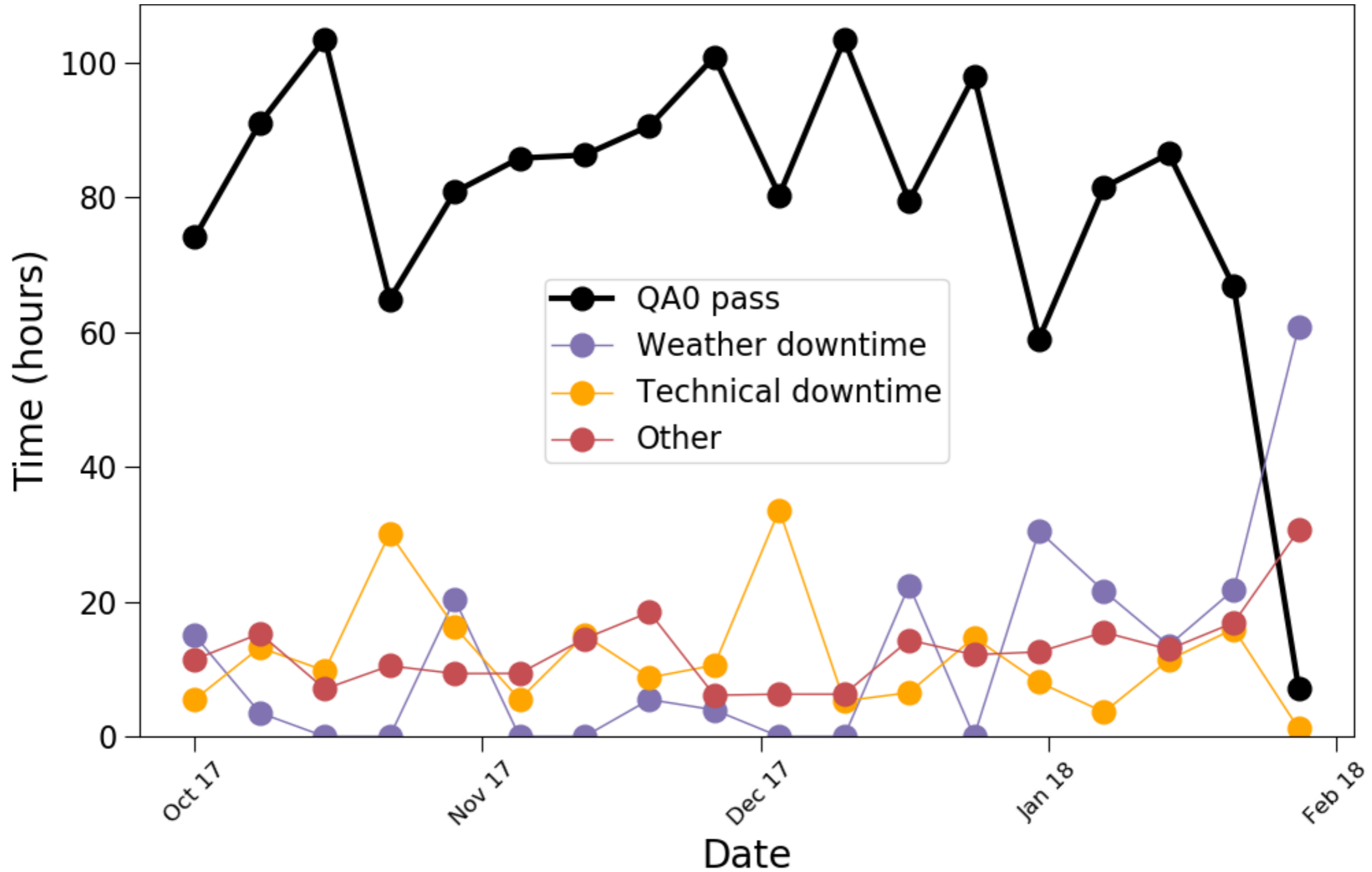


Note: The TP antennas were used in the 12-m array at the start of Cycle 5

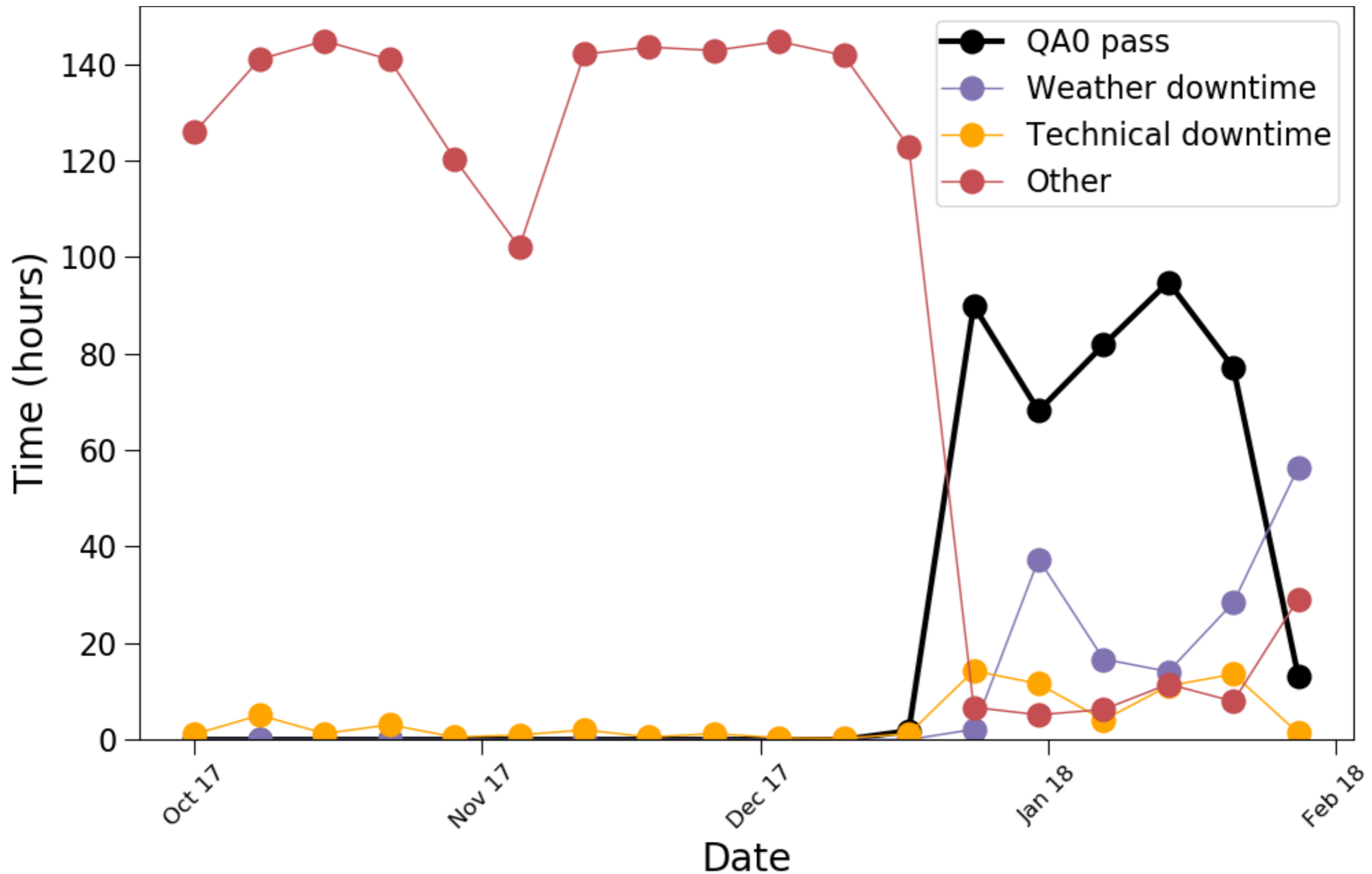
# Cycle 5 12-m Array Time



# Cycle 5 7-m Array Time



# Cycle 5 Total Power Array Time



Note: The TP antennas were used in the 12-m array at the start of Cycle 5

# Observing time in Cycle 5

Array	Time QA0 Pass (hours)
12-m	1321
7-m	1440
<b>Total Power</b>	<b>426</b>

Data as of February 1, 2018





# Cycle 5 Project Completion

Grade	N	Completion Rate			
		Completed	Partial	No Data	Resubmission
A + DDT	139	17%	29%	54%	7%
B	301	19%	25%	56%	10%
C	260	8%	26%	66%	11%

Data as of February 1, 2018



# Cycle 5 MOUS Completion: 12-m Array

Grade	N	Observing time (hours)		Completion Rate			
		Requested	Observed	Completed	Partial	No Data	Resubmissions
A + DDT	698	1377	295	19%	1%	76%	4%
B	1180	2380	628	27%	1%	65%	7%
C	931	2089	351	17%	1%	72%	10%

Data as of February 1, 2018



# Cycle 5 MOUS Completion: 7-m Array

Grade	N	Observing time (hours)		Completion Rate			
		Requested	Observed	Completed	Partial	No Data	Resubmissions
A + DDT	197	1058	851	68%	7%	19%	7%
B	174	1225	375	25%	13%	32%	30%
C	274	1425	245	29%	4%	56%	11%

Data as of February 1, 2018

# Cycle 5 MOUS Completion: Total Power Array

Grade	N	Observing time (hours)		Completion Rate			
		Requested	Observed	Completed	Partial	No Data	Resubmissions
A + DDT	123	1214	322	30%	10%	54%	6%
B	104	675	50	3%	5%	88%	5%
C	82	816	28	9%	0	87%	5%

Data as of February 1, 2018



# All Cycles, Processing Progress, since Oct. 1<sup>st</sup>, 2017

