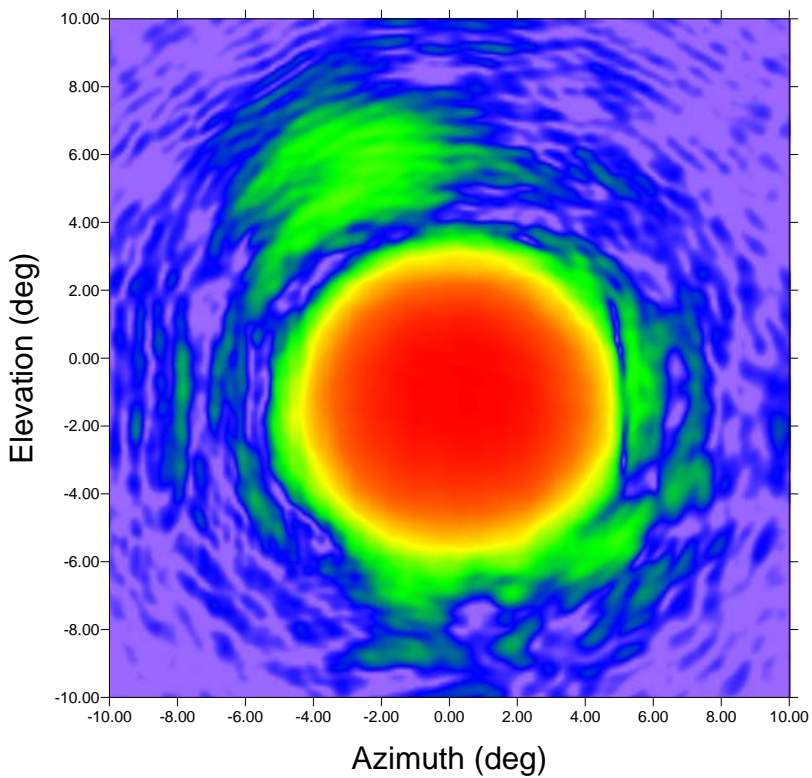
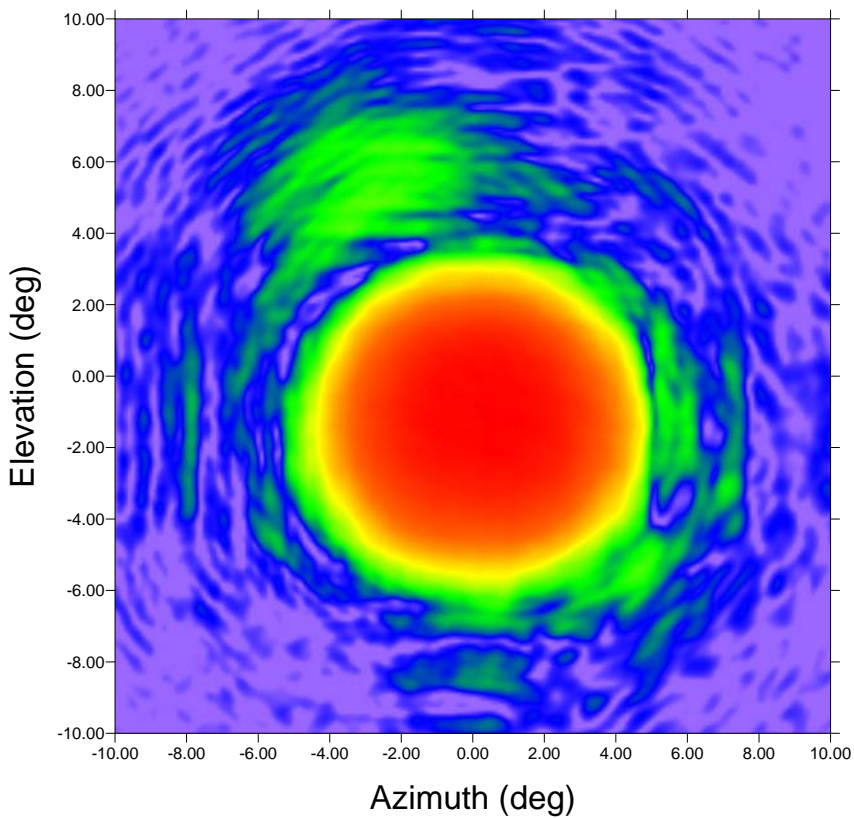


Far-field amplitude of Band 9 August 2008 FE2 Scan 4.NSI



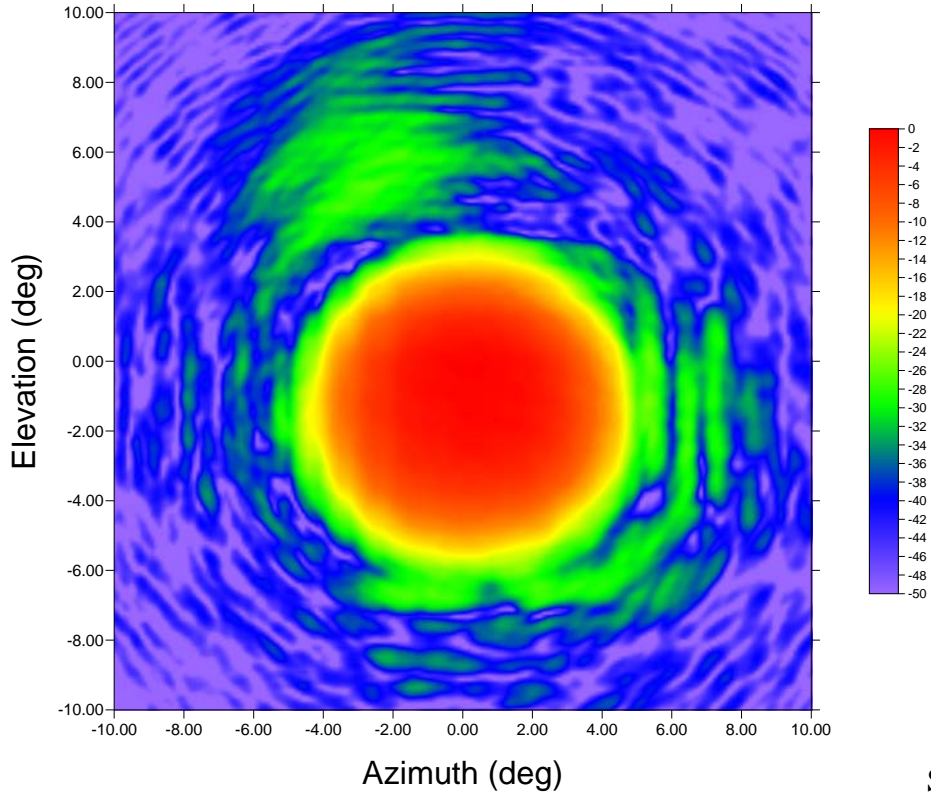
Scan 4, Beam 1

Far-field amplitude of Band 9 August 2008 FE2 Scan 4.NSI



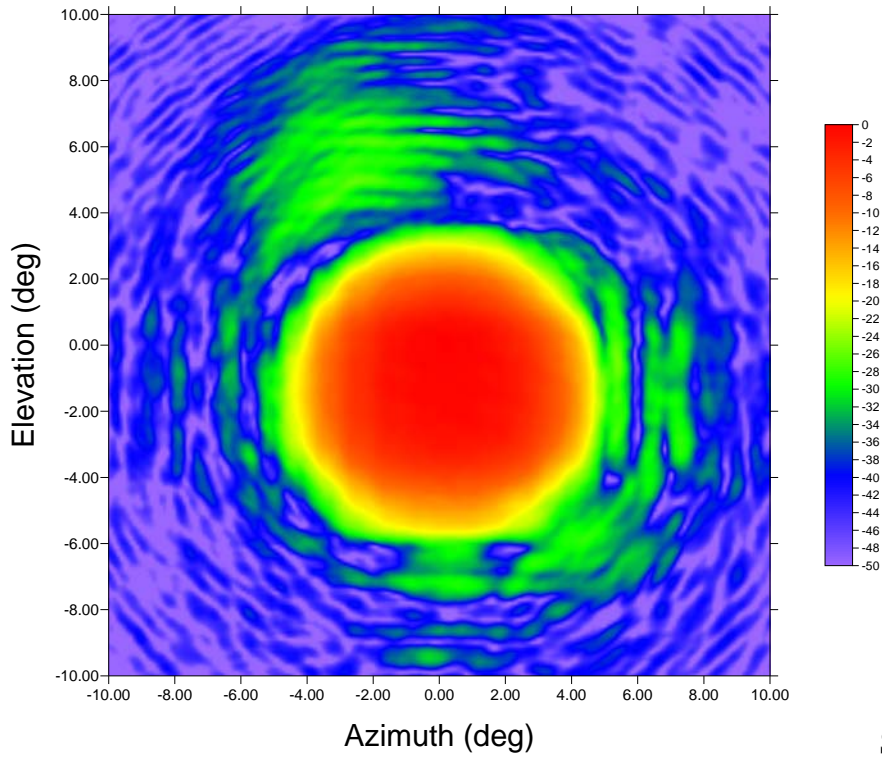
Scan 4, Beam 2

Far-field amplitude of Band 9 August 2008 FE2 Scan 5.NSI



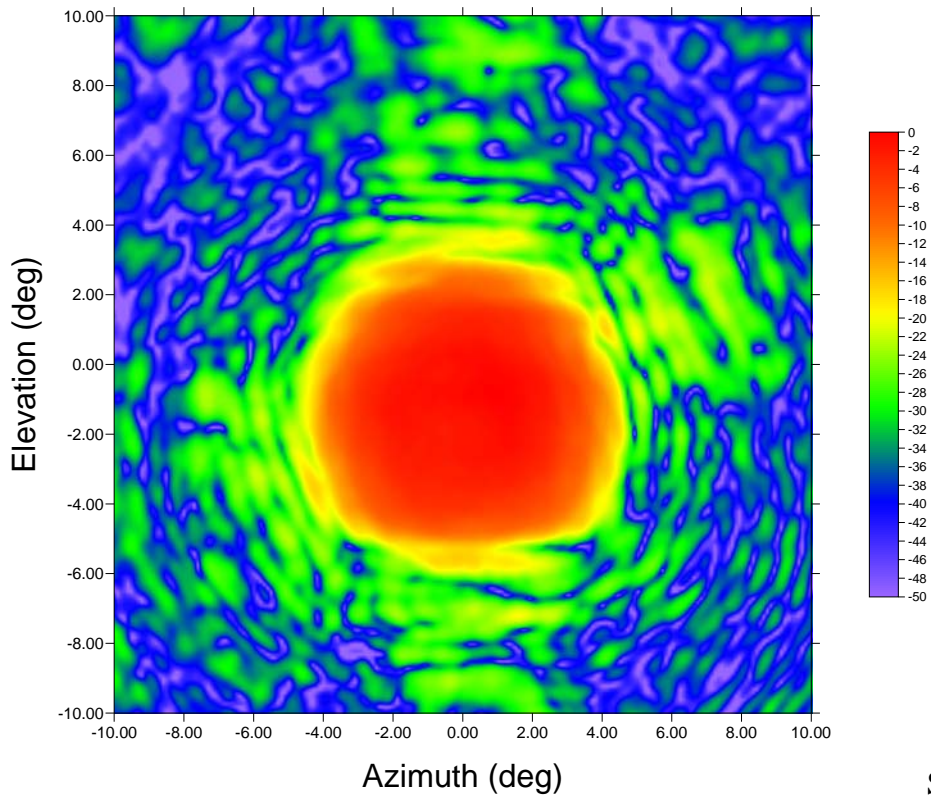
Scan 5, Beam 1

Far-field amplitude of Band 9 August 2008 FE2 Scan 5.NSI



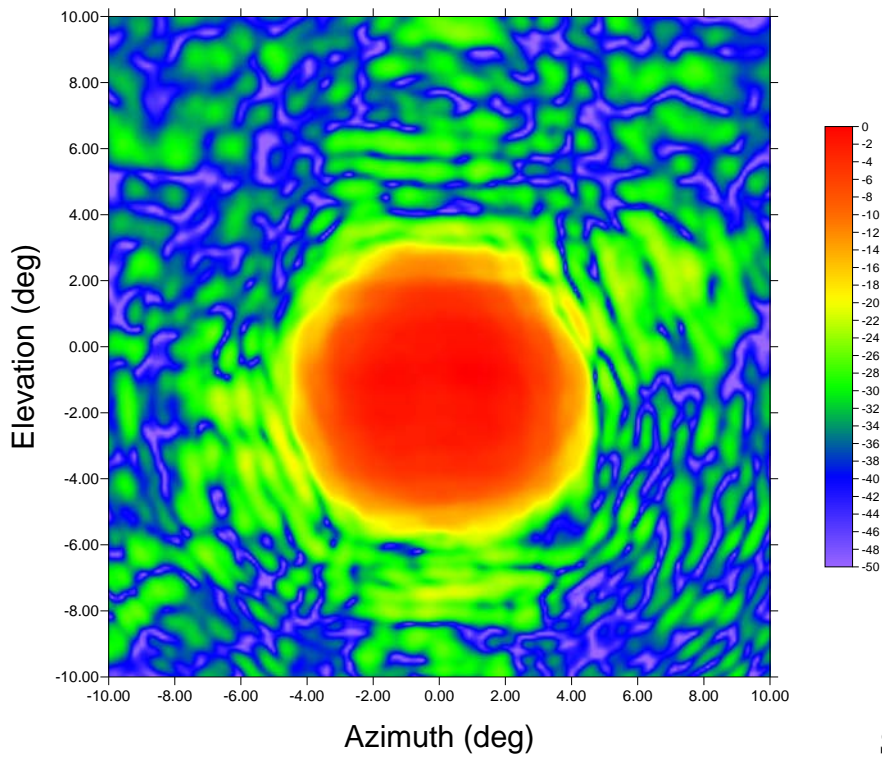
Scan 5, Beam 2

Far-field amplitude of Band 9 August 2008 FE2 Scan 11.NSI



Scan 11, Beam 1

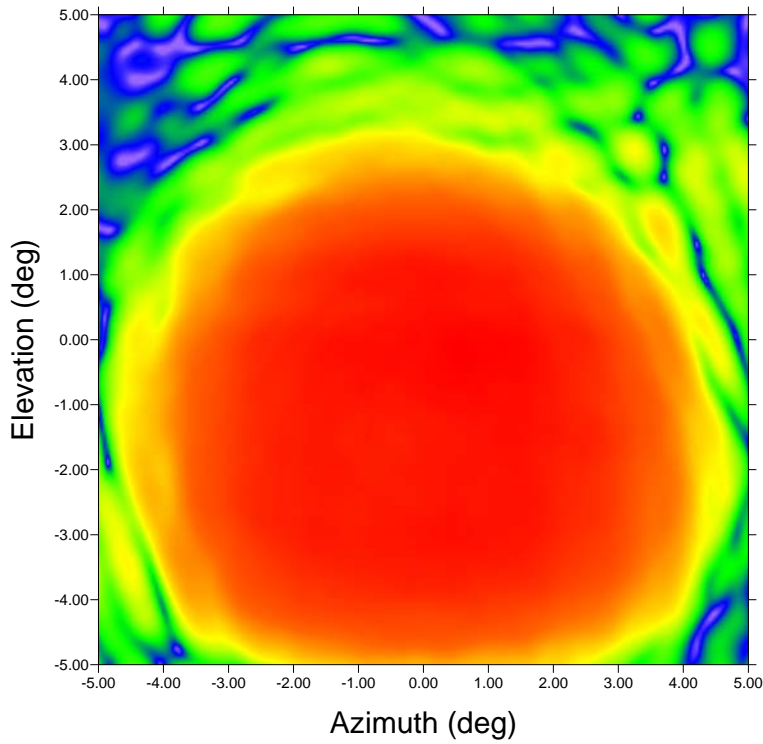
Far-field amplitude of Band 9 August 2008 FE2 Scan 11.NSI



Scan 11, Beam 2

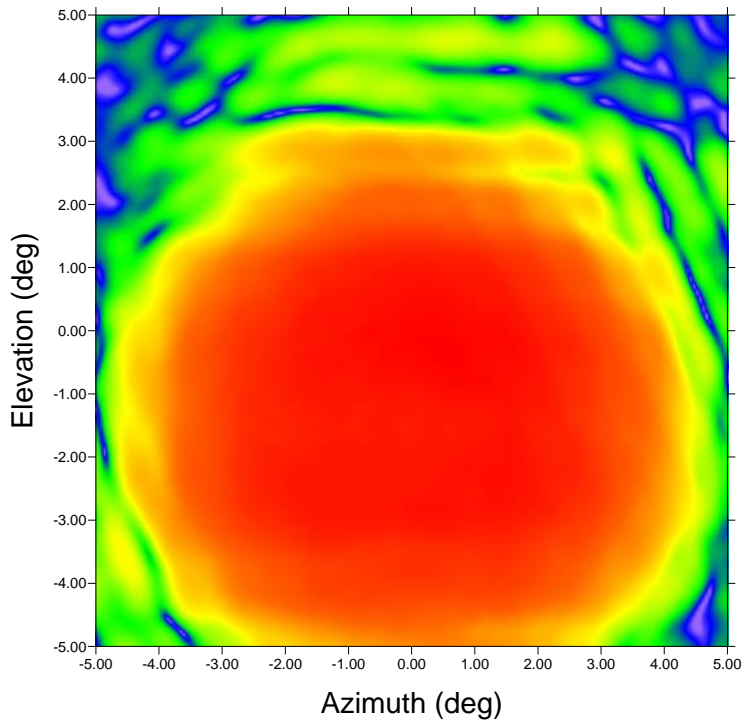


Far-field amplitude of Band 9 August 2008 FE2 Scan 12.NSI

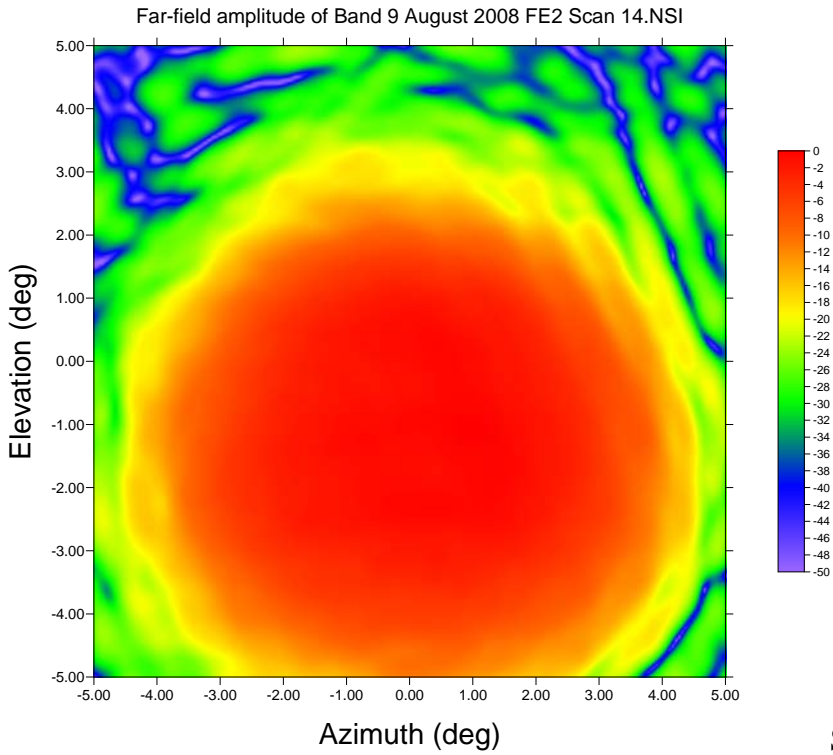


Scan 12, Beam 1

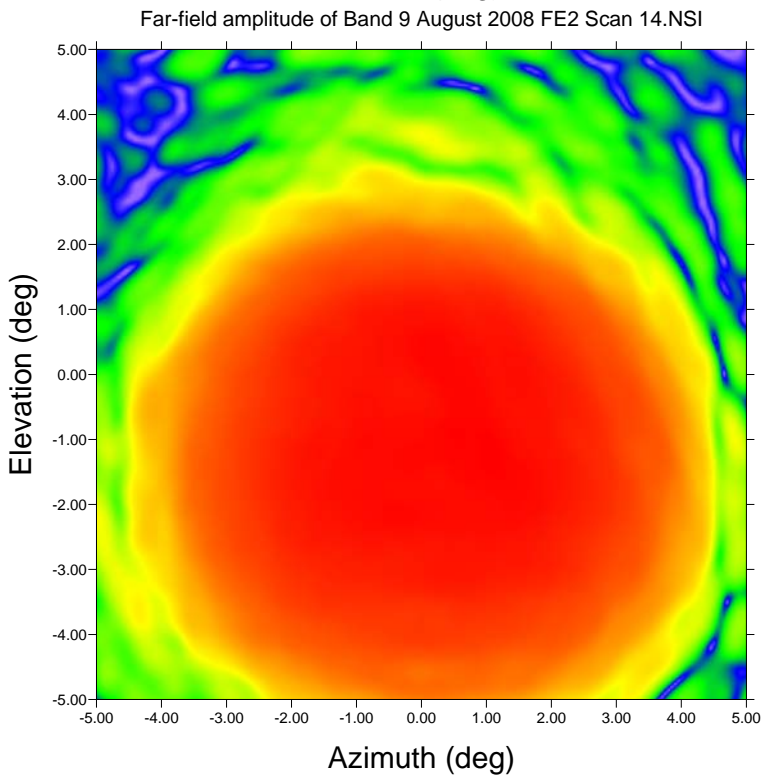
Far-field amplitude of Band 9 August 2008 FE2 Scan 12.NSI



Scan 12, Beam 2

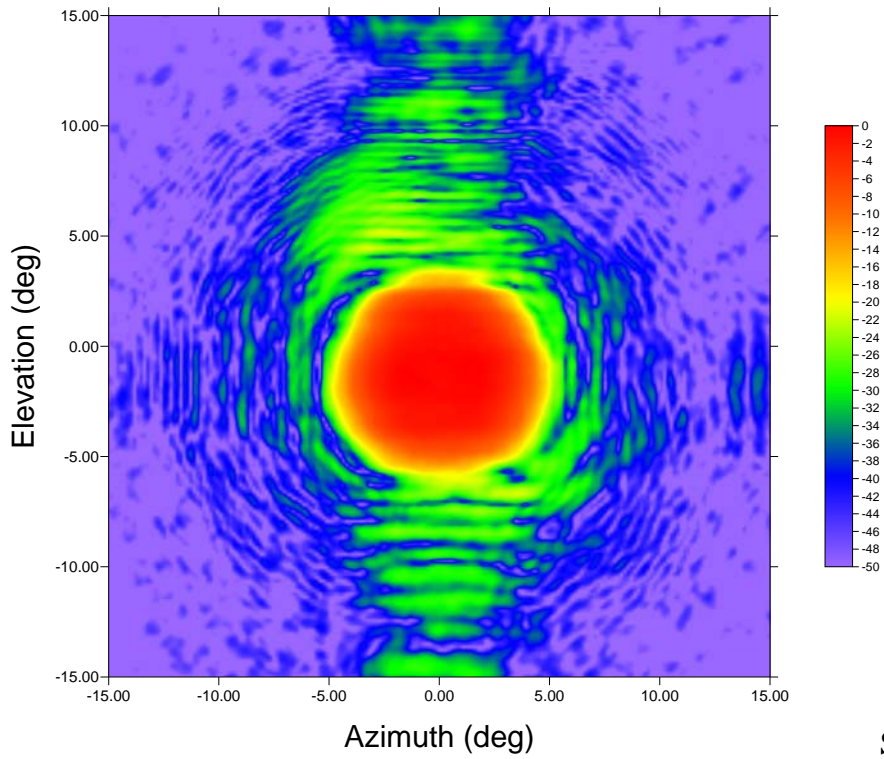


Scan 14, Beam 1



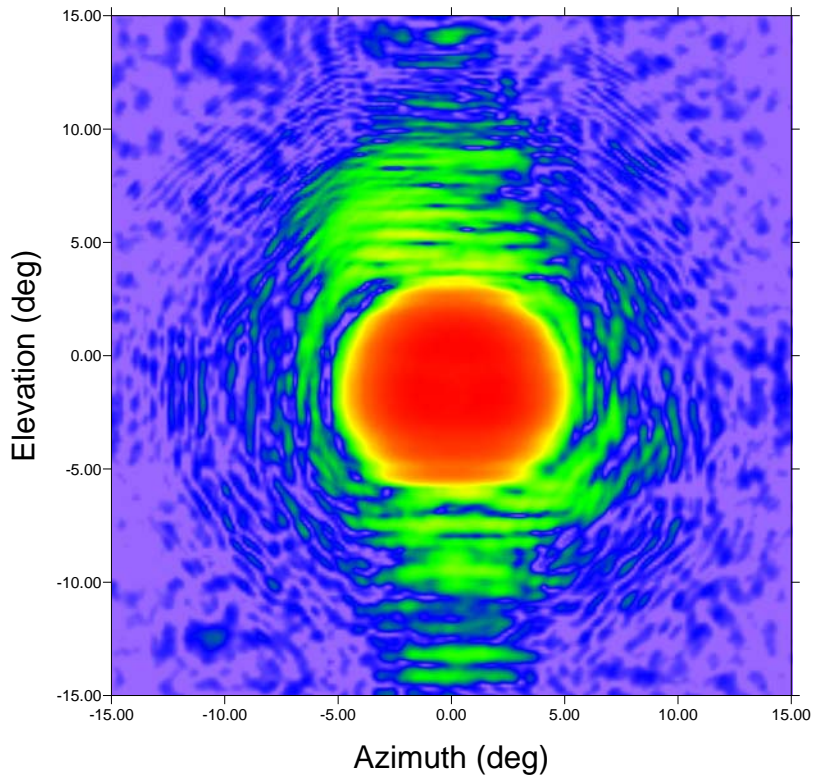
Scan 14, Beam 2

Far-field amplitude of Band 9 August 2008 FE2 Scan 18.NSI



Scan 18, Beam 1

Far-field amplitude of Band 9 August 2008 FE2 Scan 18.NSI



Scan 18, Beam 2