



10.3 RF = 115 GHz, Pol 0

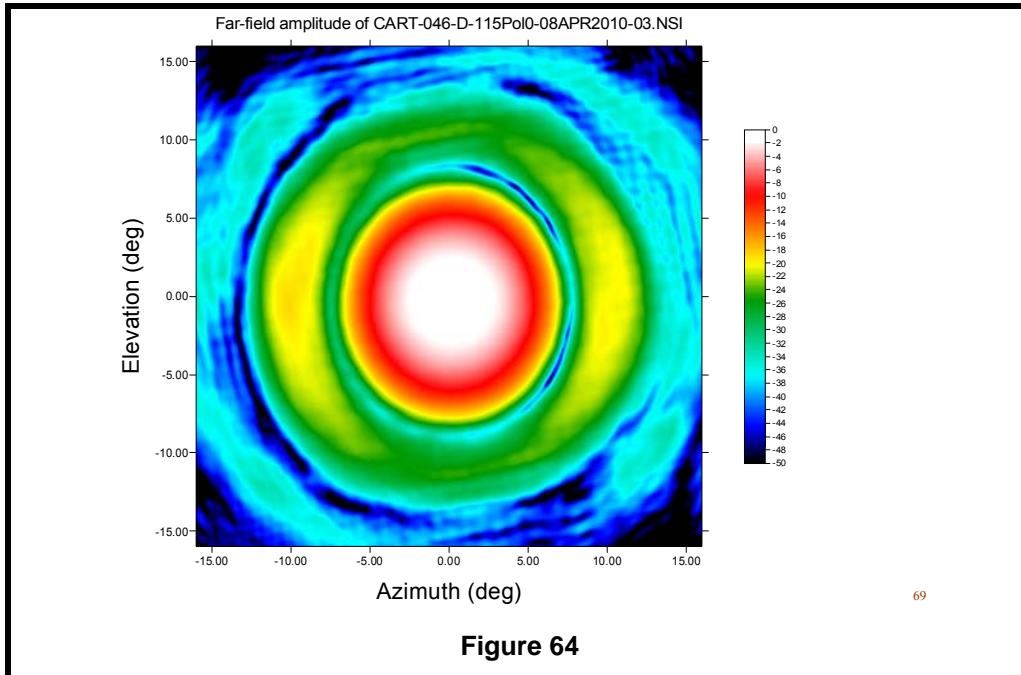


Figure 64

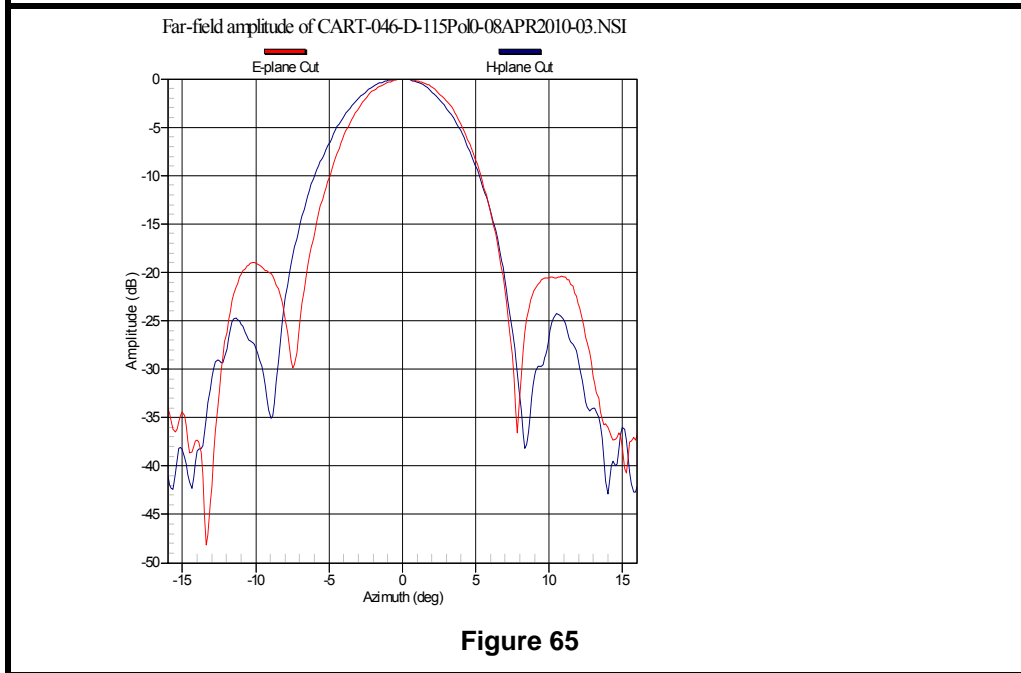
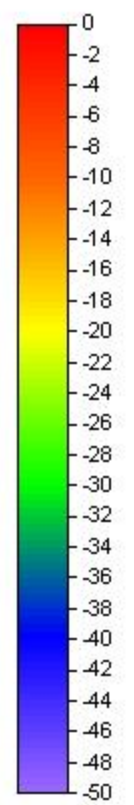
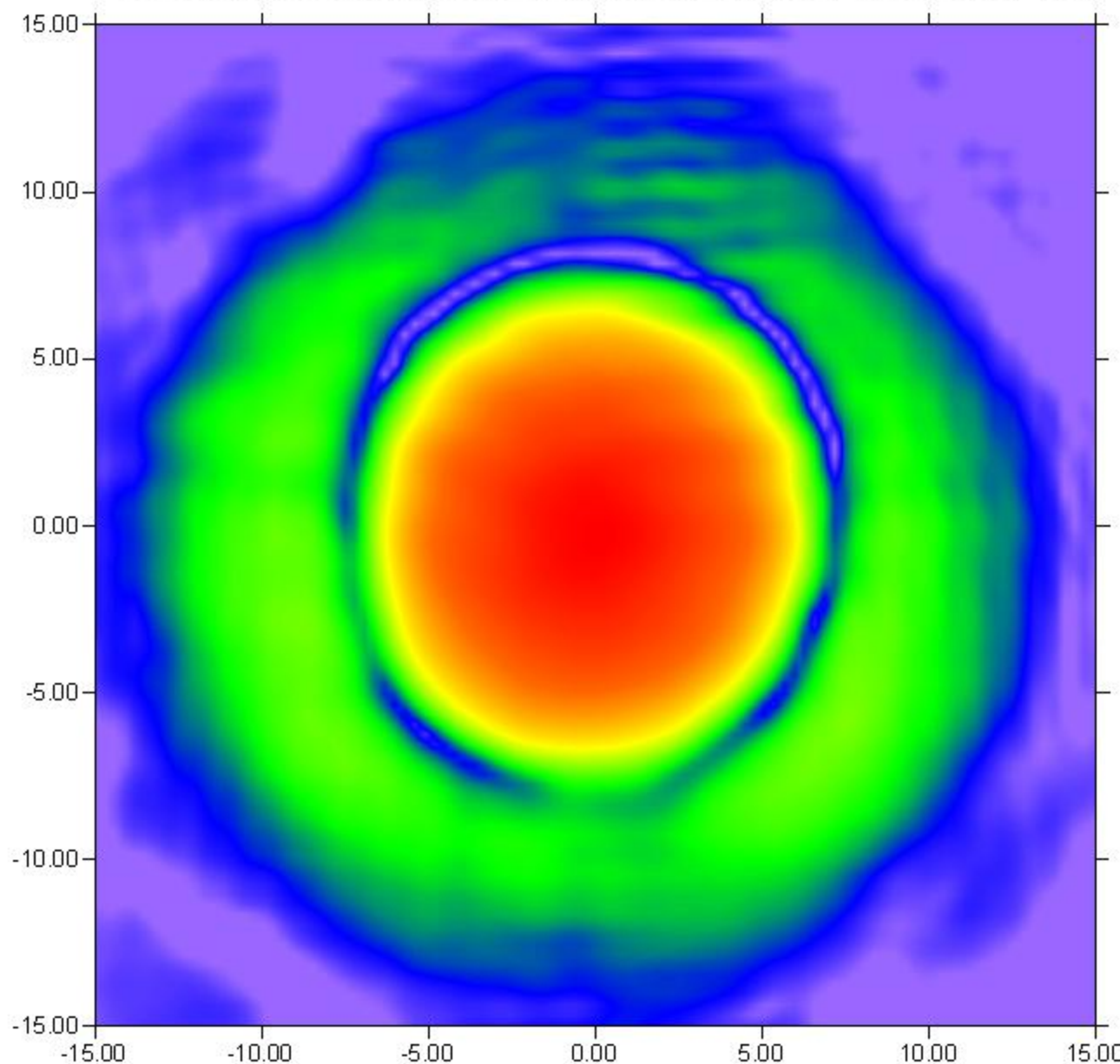


Figure 65

⁶⁹ P:\CART\CART-046-D\BMP\001\BMP for report\CART-046-D-BMP115_0-Plots-001.xls

Far-field amplitude of Band3_115GHz45el_p0_20101217_160004.nsi

Elevation (deg)



Azimuth (deg)



11.3 RF = 115 GHz, Pol 0

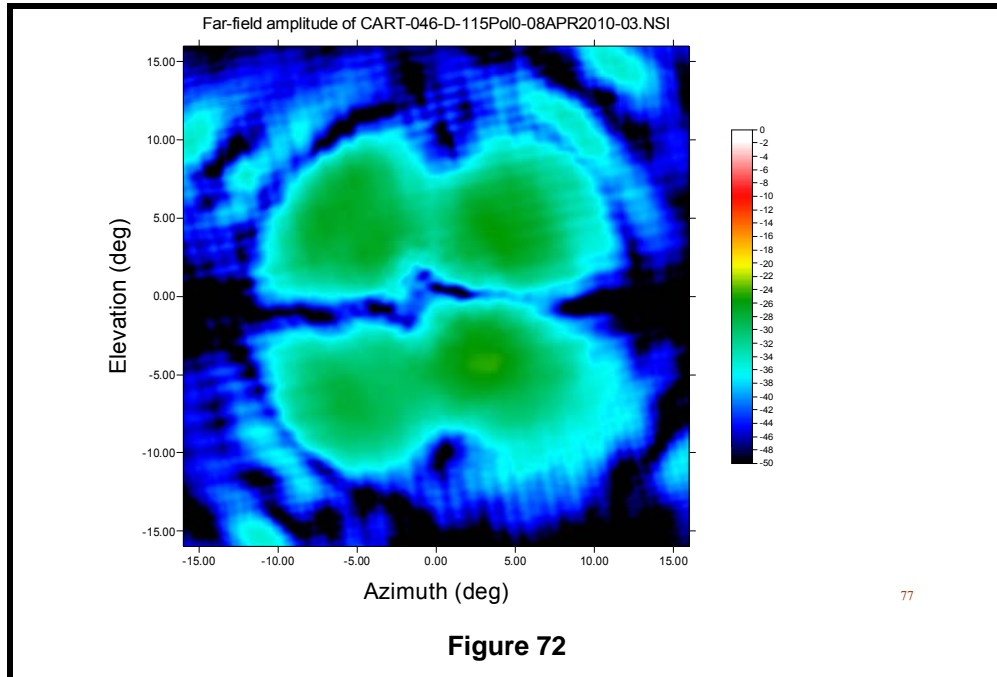


Figure 72

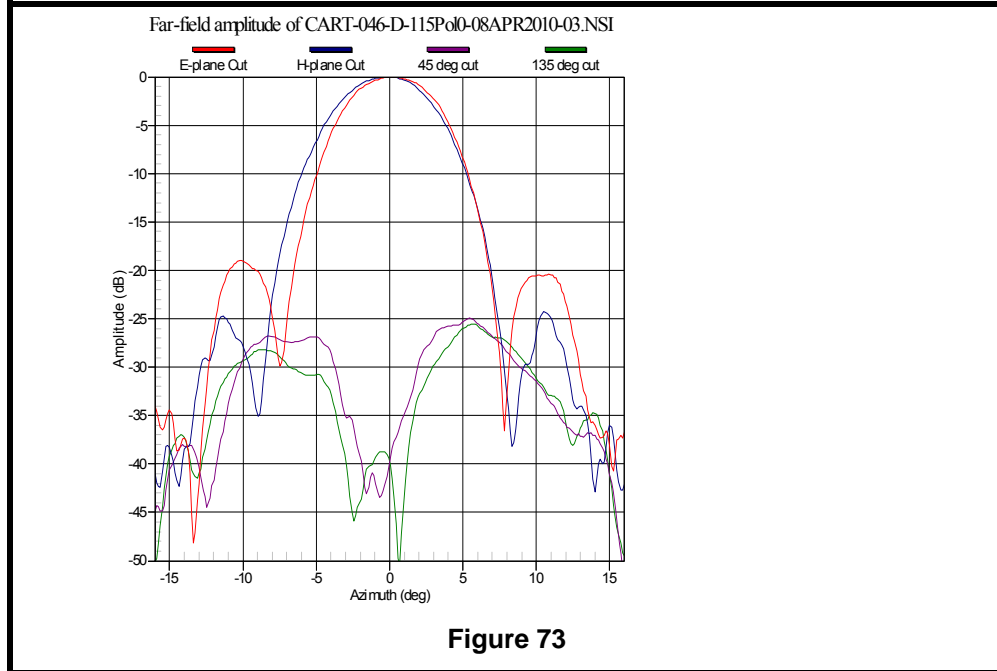
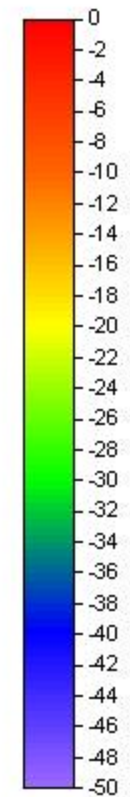
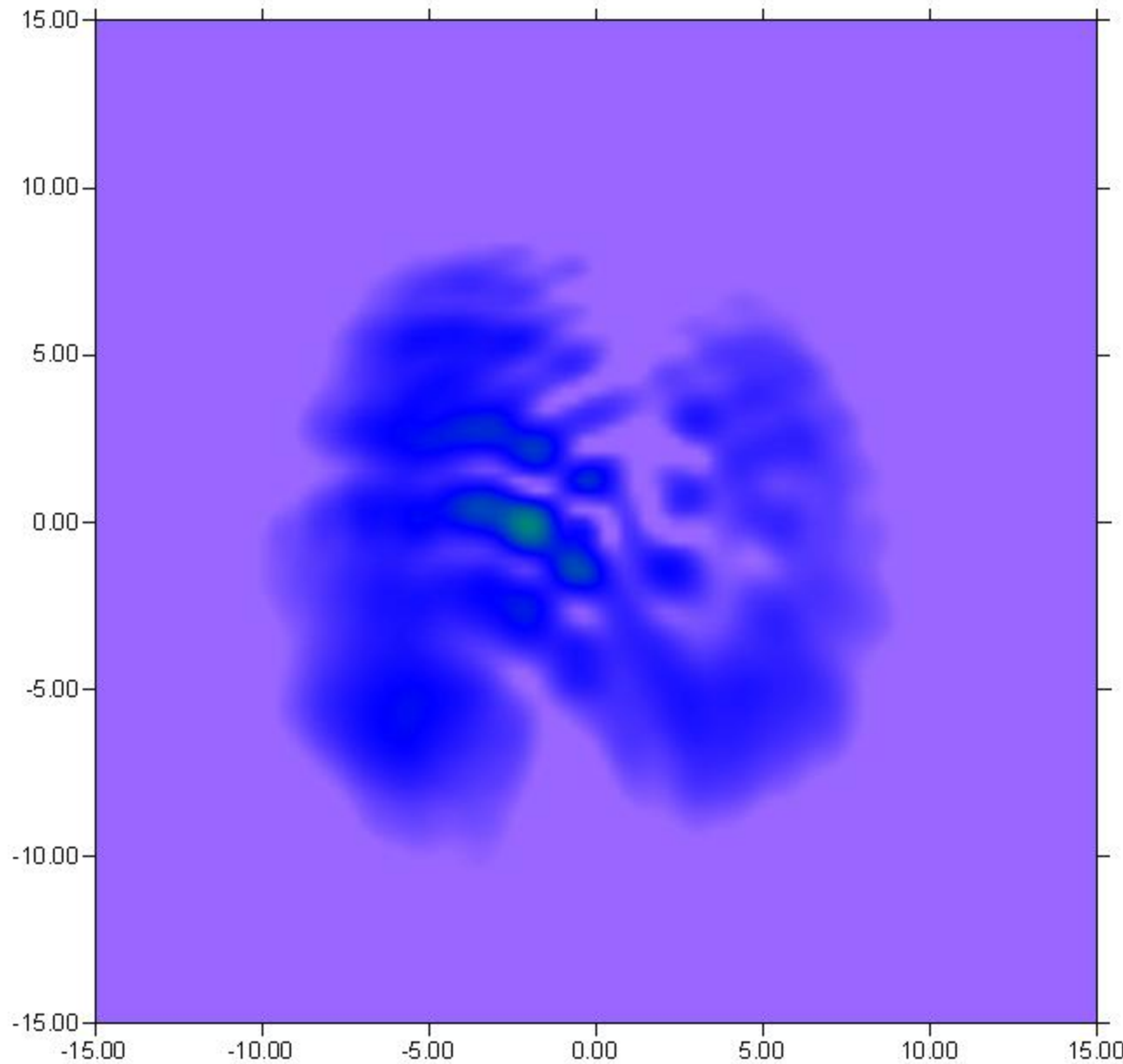


Figure 73

⁷⁷ P:\CART\CART-046-D\BMP\001\BMP for report\CART-046-D-BMP115_0-Plots-001.xls

Far-field amplitude of Band3_115GHz45el_p0_20101217_160004.nsi

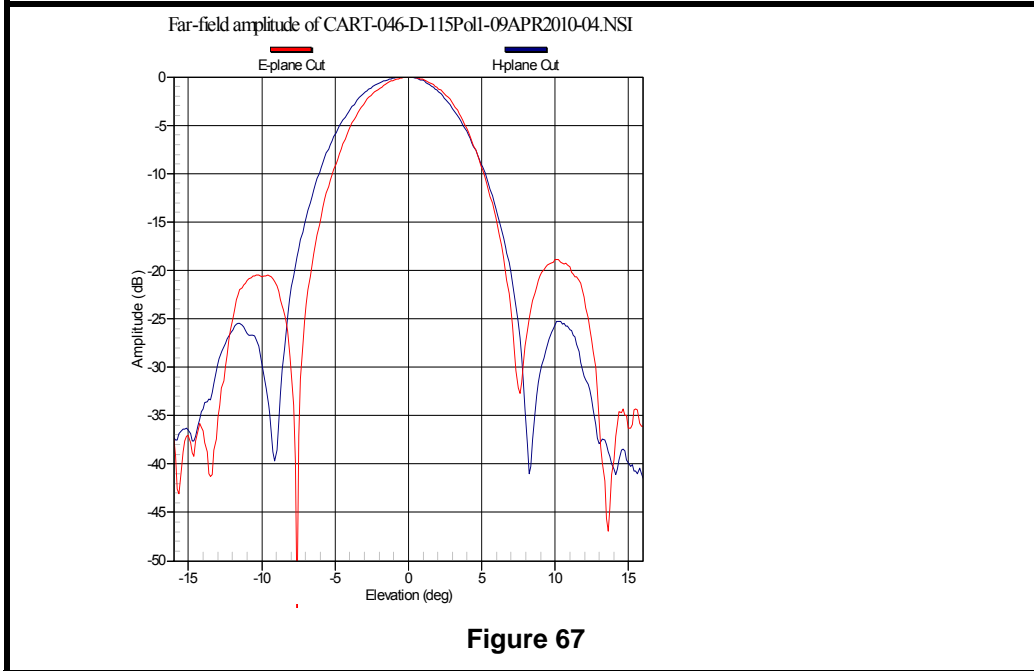
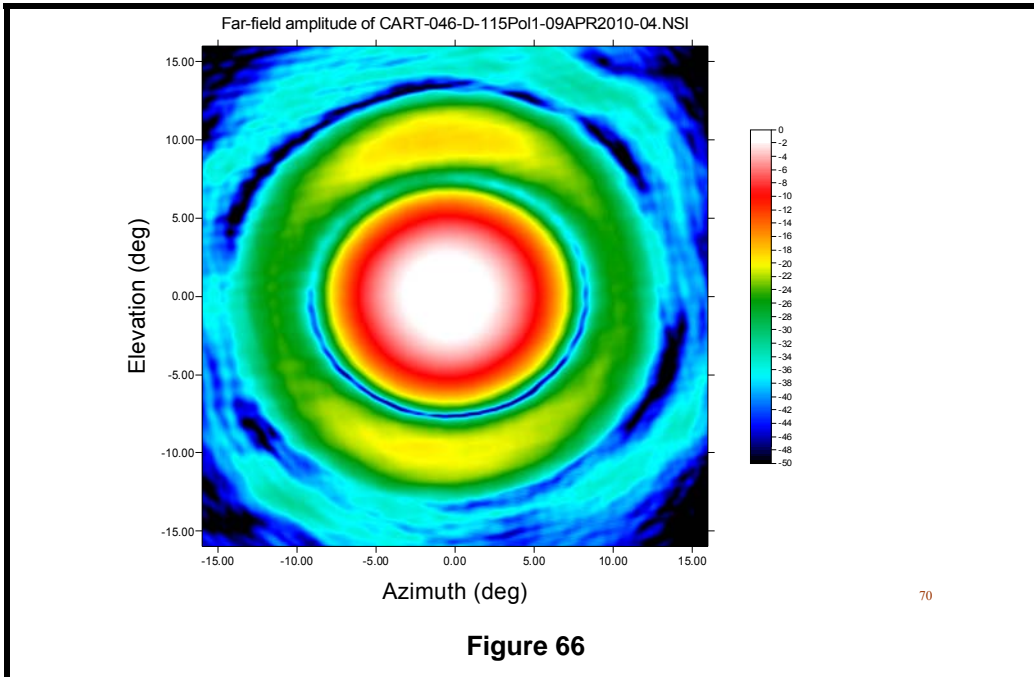
Elevation (deg)



Azimuth (deg)

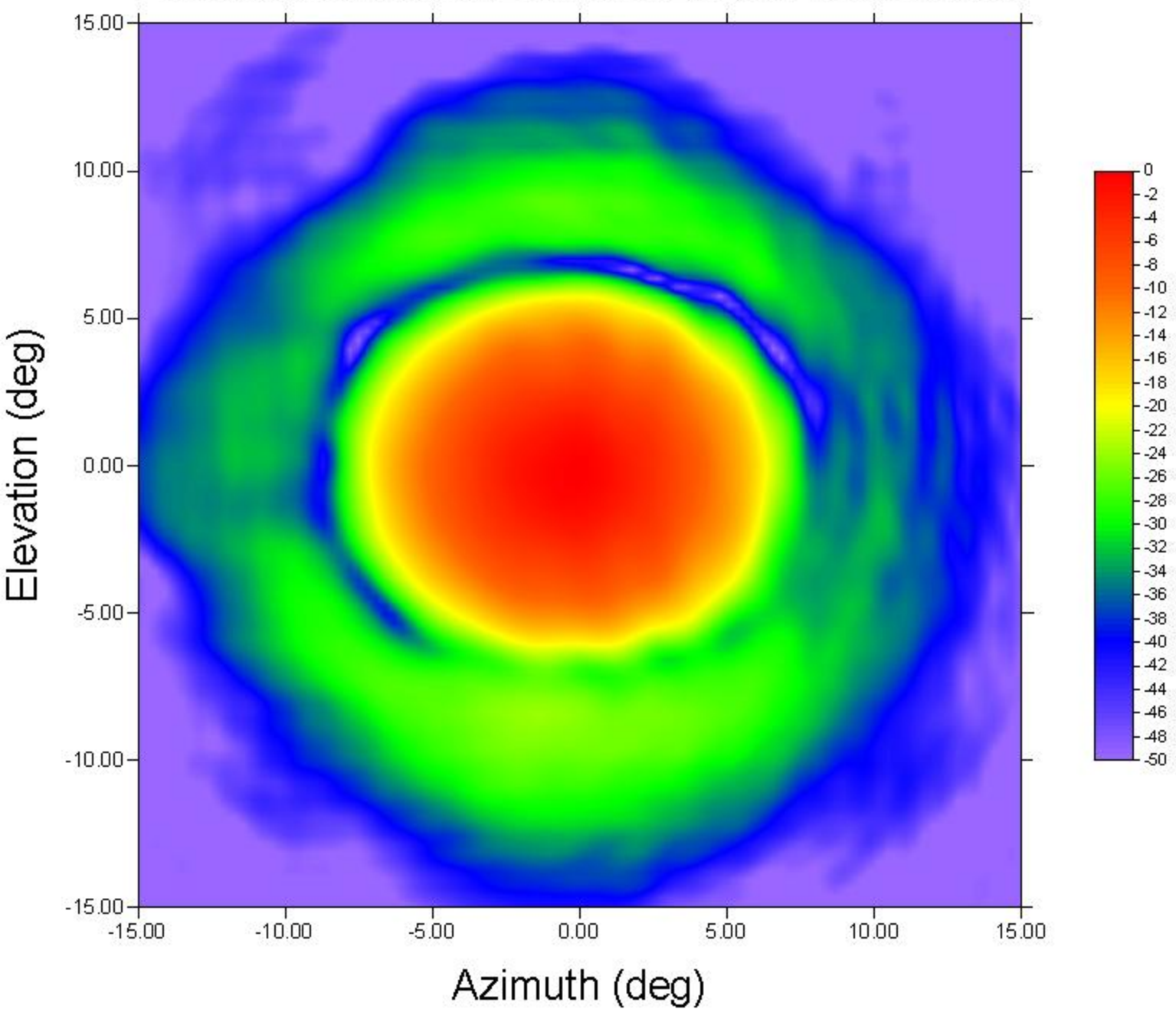


10.4 RF = 115 GHz, Pol 1

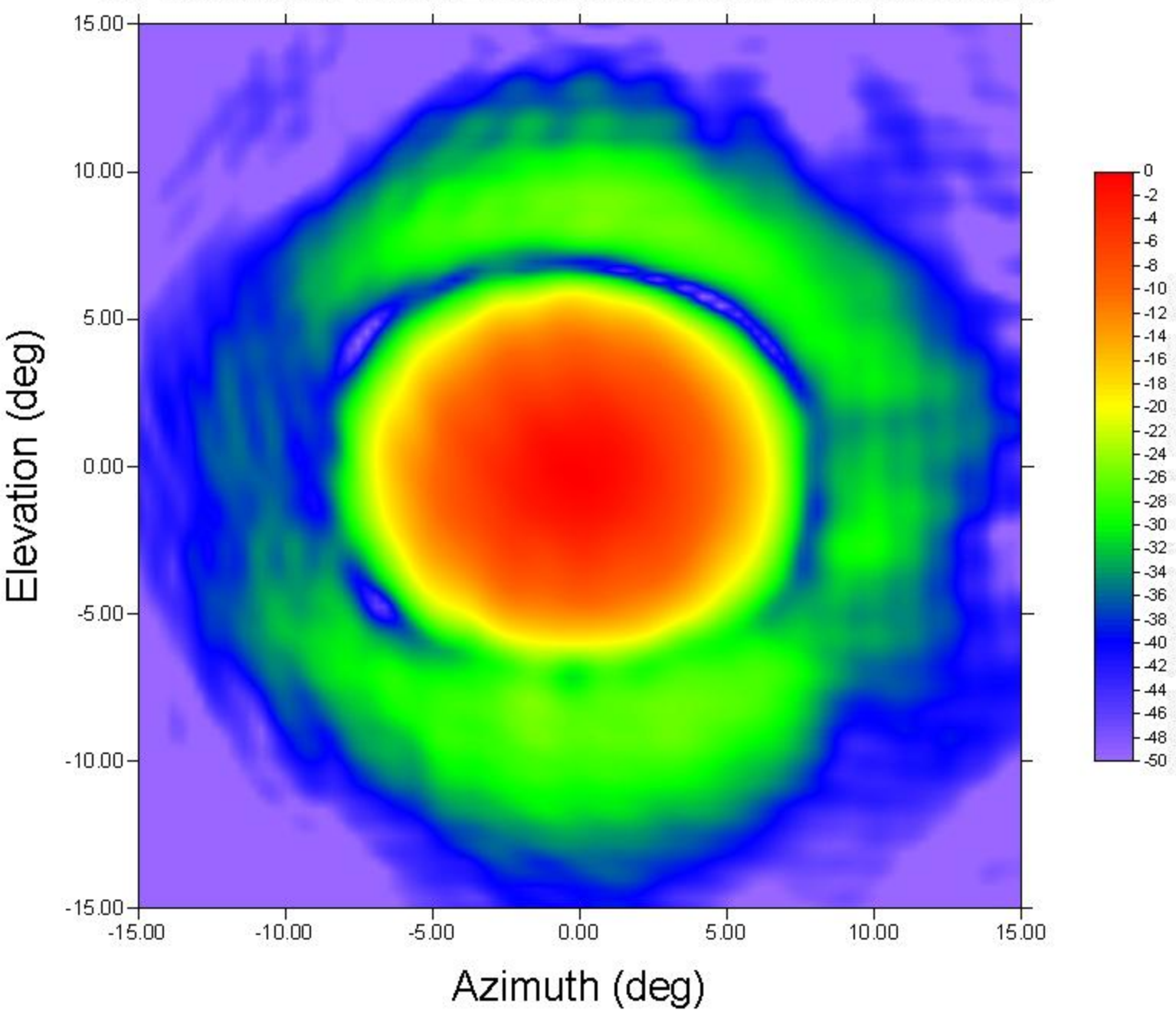


⁷⁰ P:\CART\CART-046-D\BMP\001\BMP for report\CART-046-D-BMP115_0-Plots-001.xls

Far-field amplitude of Band3_115GHz45el_p1_20101217_170733.nsi



Far-field amplitude of Band3_115GHz45el_p1_180_20101217_181504.nsi





11.4 RF = 115 GHz, Pol 1

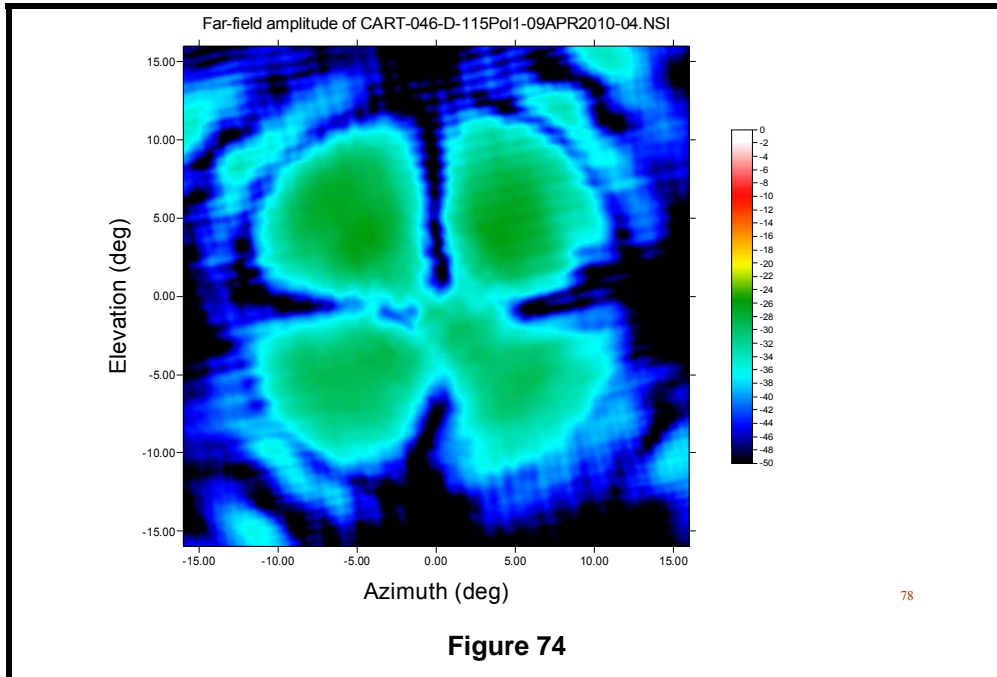


Figure 74

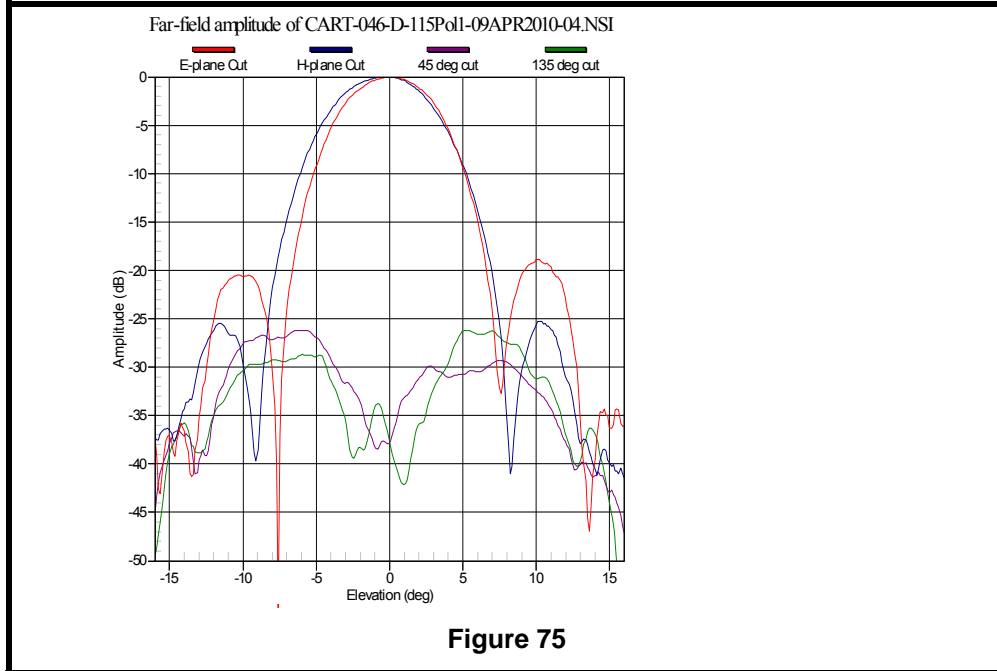
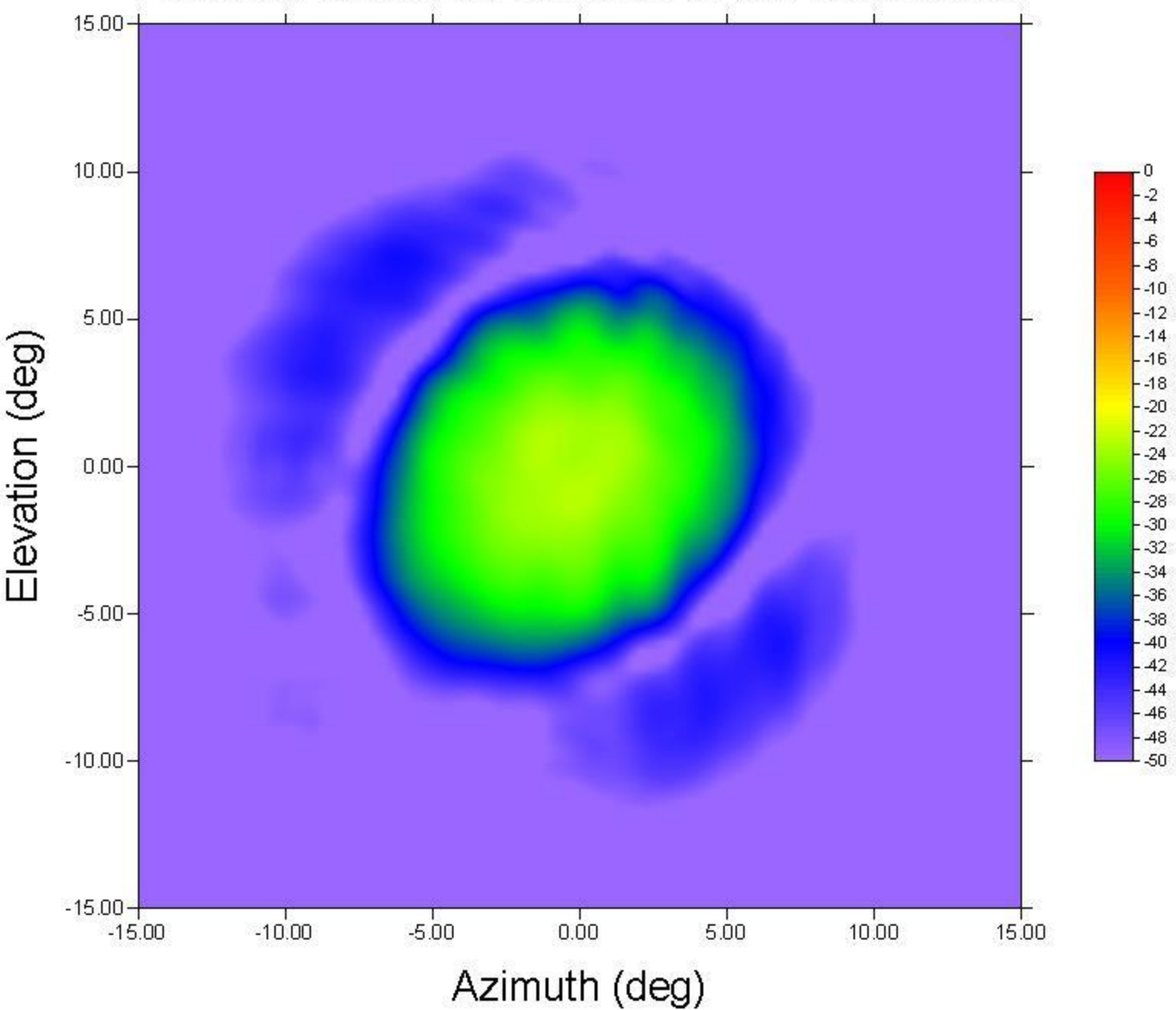


Figure 75

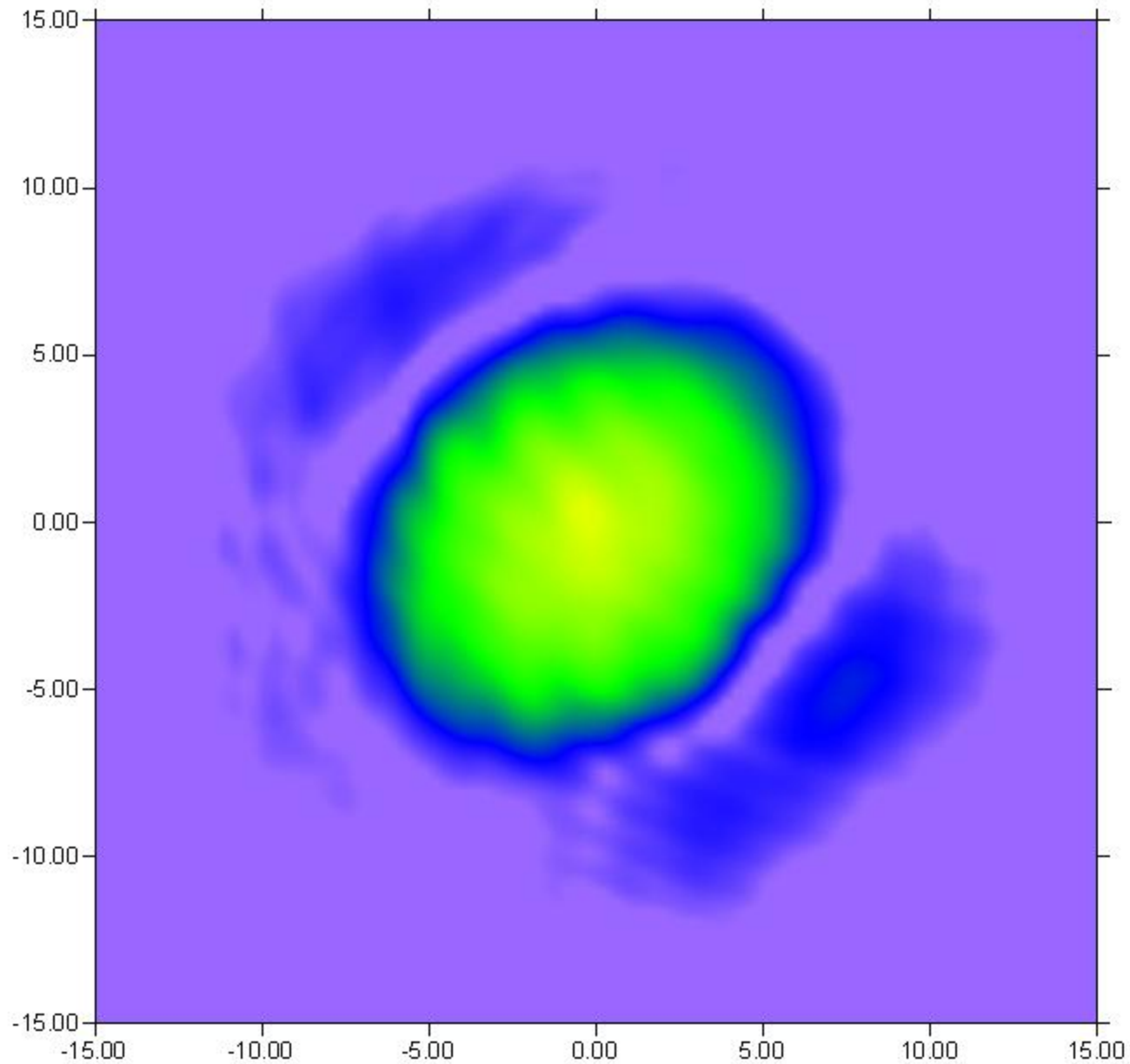
⁷⁸ P:\CART\CART-046-D\BMP\001\BMP for report\CART-046-D-BMP115_0-Plots-001.xls

Far-field amplitude of Band3_115GHz45el_p1_20101217_170733.nsi



Far-field amplitude of Band3_115GHz45el_p1_180_20101217_181504.nsi

Elevation (deg)



Azimuth (deg)