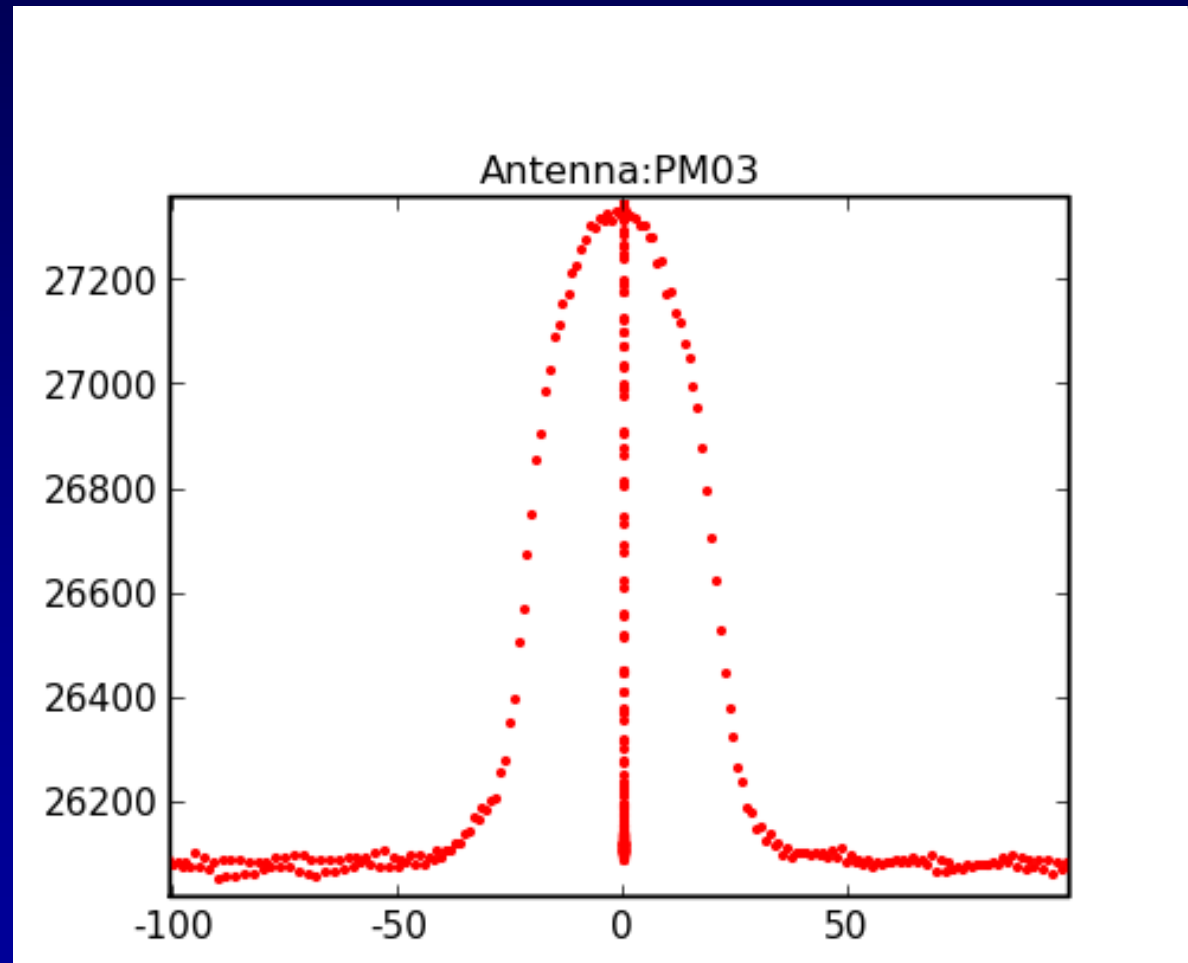
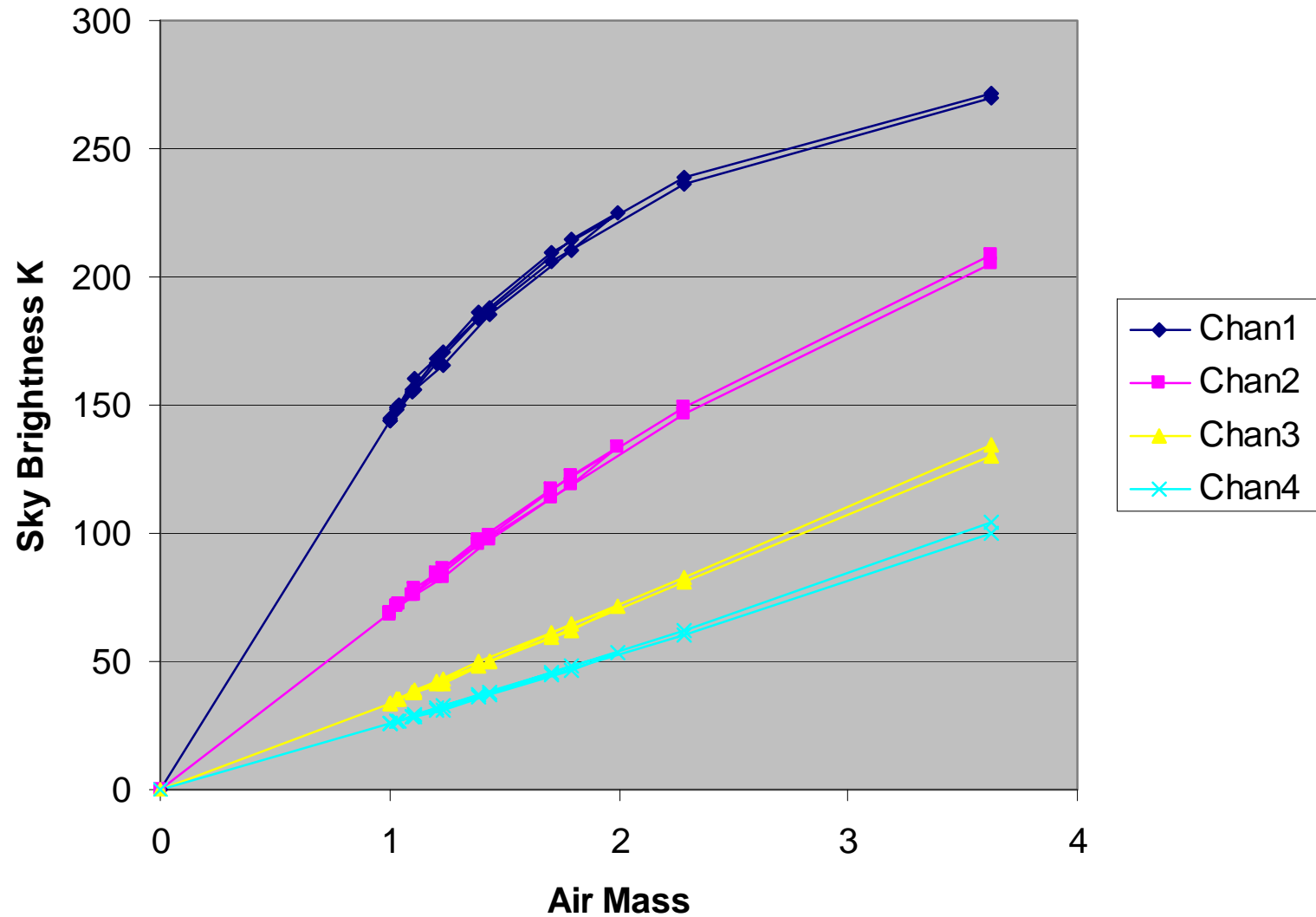


ALMA STATUS – July 2009

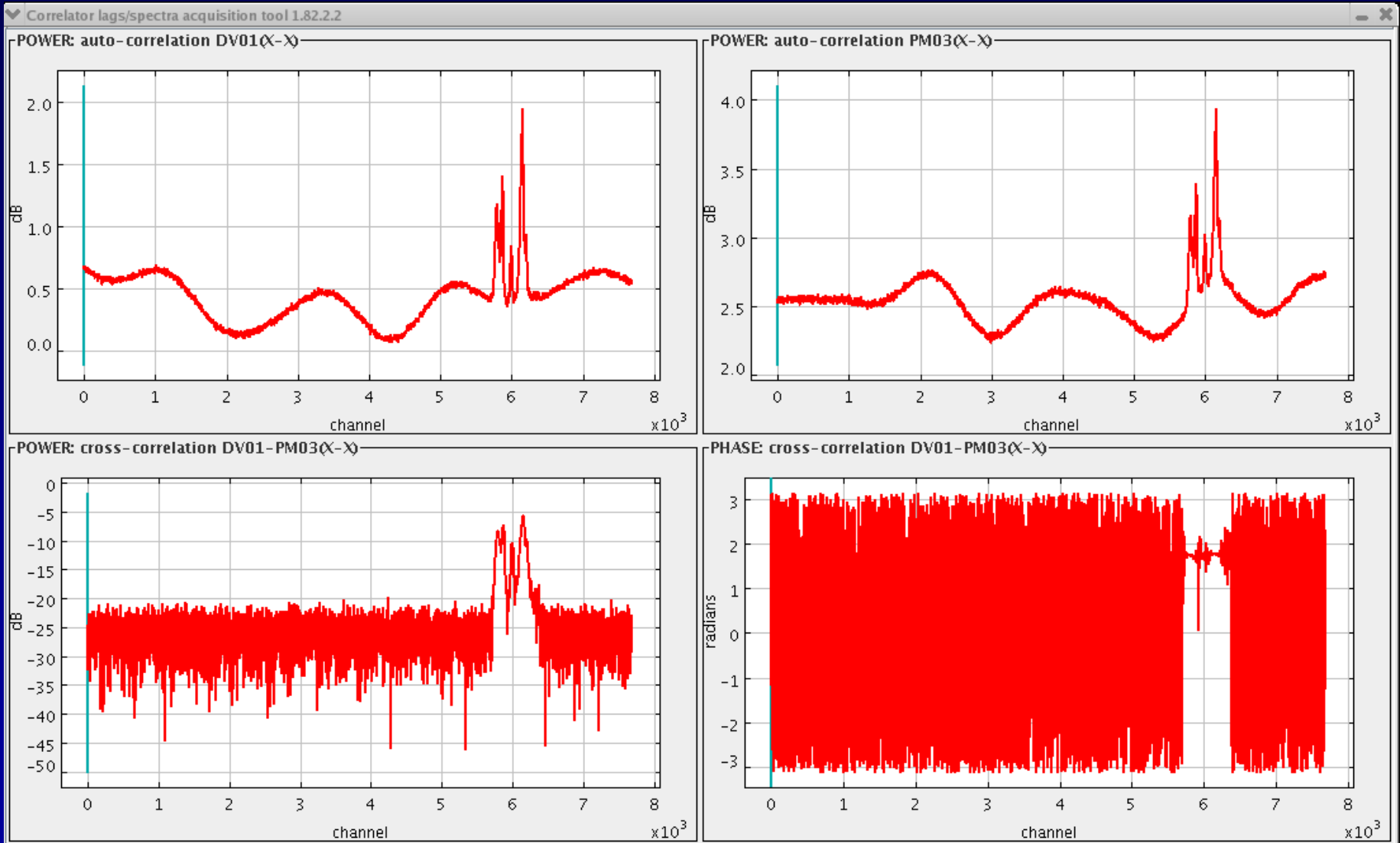
Scan of Jupiter
at 690 GHz.
(from the OSF !)
July 4th 2009



WVR sky dip – 0.75mm of H₂O !

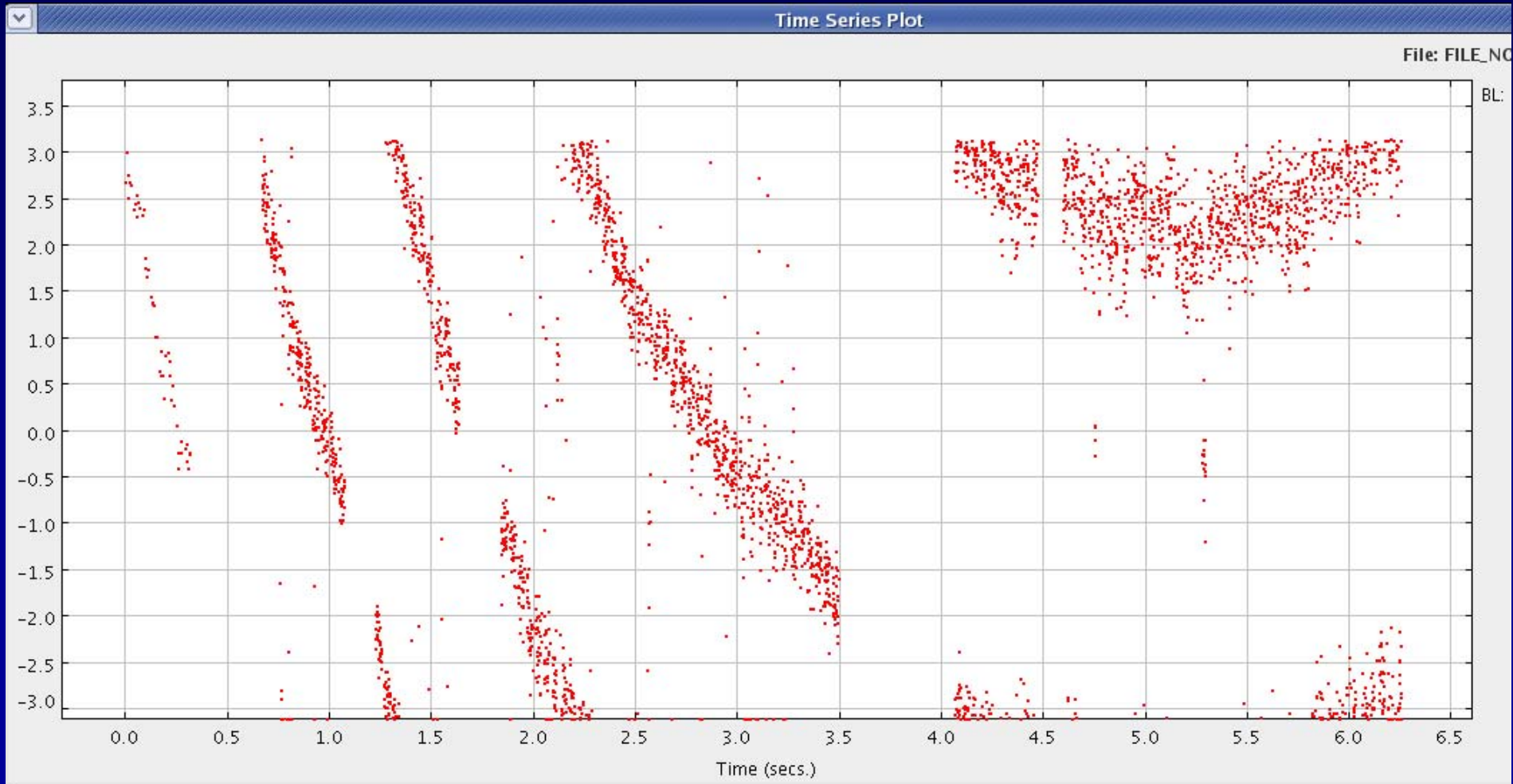


First “proper” fringe – 12th June 09



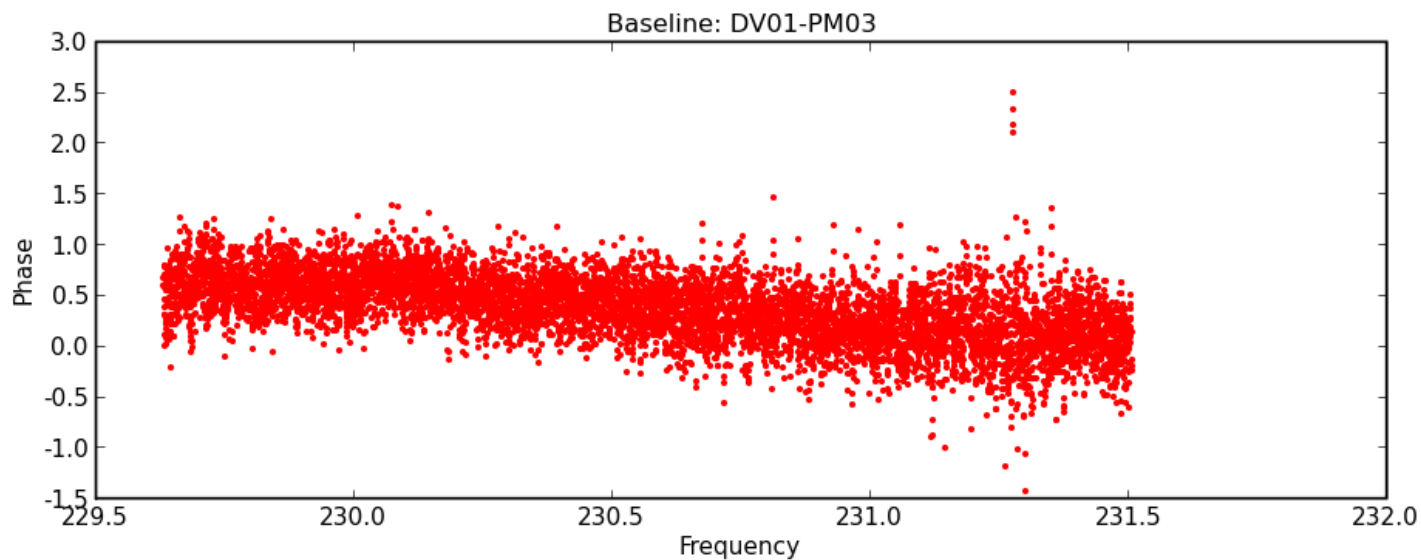
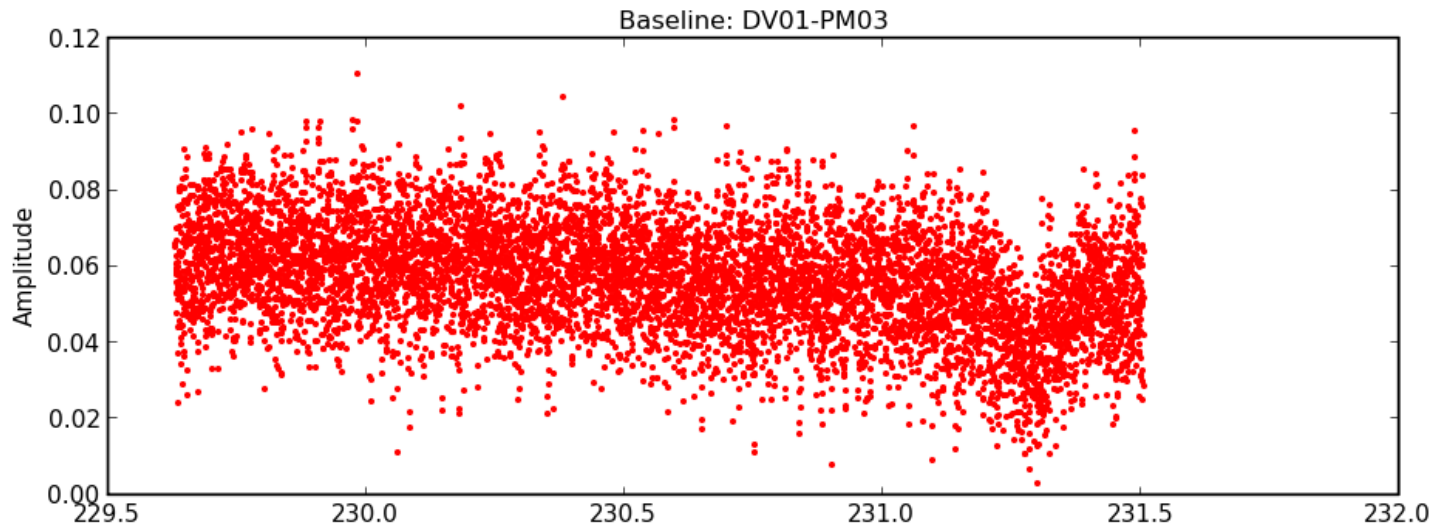
Track for nearly 2 hours

– still some things to be solved !



Fringes on 3C273 – note frequency

ASDM: uid__X5f_X7982_X1



Recent Major Items

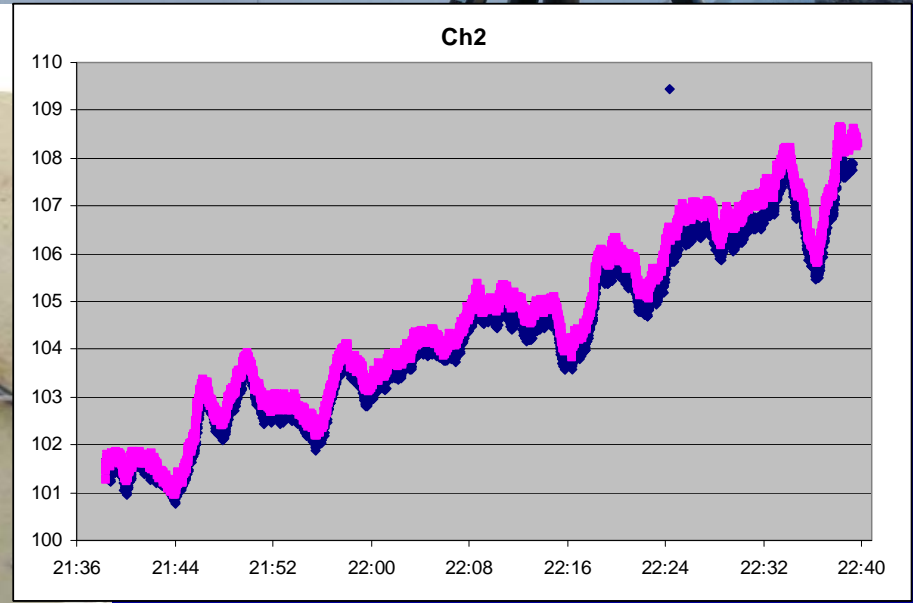
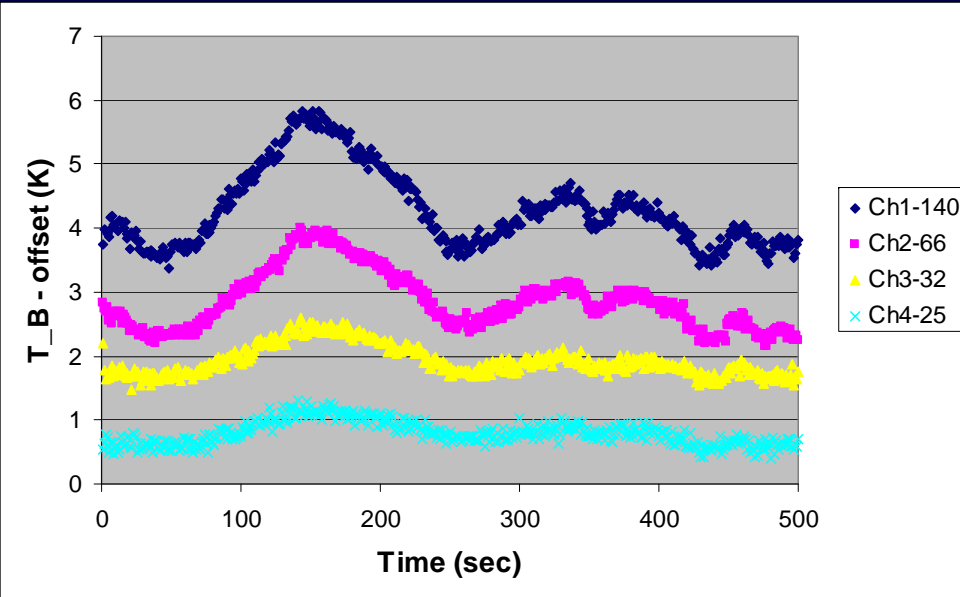
- Software version 6.1 installed and in use – supports all the basic interferometry functions.
- Lots more antennas arriving at site, plus backends, test equipment, etc. (No more front ends yet!)
- Fibre-wraps – devices to bring the LO reference signals round the Az and El axes delivered and being tested.
- Full 16-element LO system has completed its tests and is being shipped direct to the OSF.
- Second single-baseline correlator in place at the OSF.

More Items

- Software CDR #7 was held in Santiago – an impressive amount of activity here.
- New office building in Santiago has started – a large hole in the ground at the ESO Vitacura site.
- “Charter” for the residencia at the OSF drawn up.
- Team in Chile being strengthened: new leads for Systems Engineering and Product Assurance
- Short-listing recently drawn up for more Commissioning Scientists, Operations Astronomers and System Astronomers plus the Archive Manager.









www.alma.cl

The Atacama Large Millimeter/submillimeter Array (ALMA), an international astronomy facility, is a partnership of Europe, North America and East Asia in cooperation with the Republic of Chile. ALMA is funded in Europe by the European Organization for Astronomical Research in the Southern Hemisphere (ESO), in North America by the U.S. National Science Foundation (NSF) in cooperation with the National Research Council of Canada (NRC) and the National Science Council of Taiwan (NSC) and in East Asia by the National Institutes of Natural Sciences (NINS) of Japan in cooperation with the Academia Sinica (AS) in Taiwan. ALMA construction and operations are led on behalf of Europe by ESO, on behalf of North America by the National Radio Astronomy Observatory (NRAO), which is managed by Associated Universities, Inc. (AUI) and on behalf of East Asia by the National Astronomical Observatory of Japan (NAOJ). The Joint ALMA Observatory (JAO) provides the unified leadership and management of the construction, commissioning and operation of ALMA.