

DV01

rlucas@gns 09-JUN-2010 20:24:16

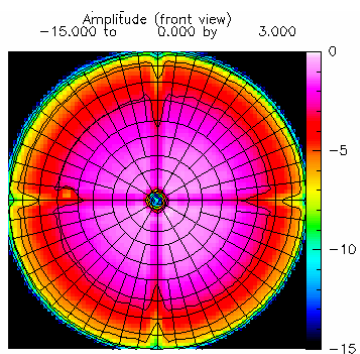
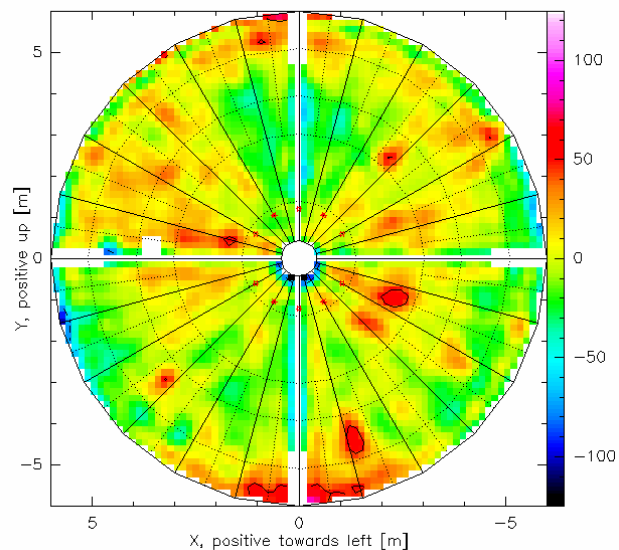
ALMA

Result file: DV01-ast

- Required panel motion towards focus (μm)
(positive number means a hole)
- map as seen from focus.

/users/rlucas/ASTROH0LO/DV01 DV02 DV03 DV05 PM03/20100604/

rms (unweighted) 20.48 μm
 rms (amp. weighted) 19.29 μm
 rms (12dB weighted, cos α included) 18.43 μm



DV02

rlucas@gns 09-JUN-2010 20:25:13

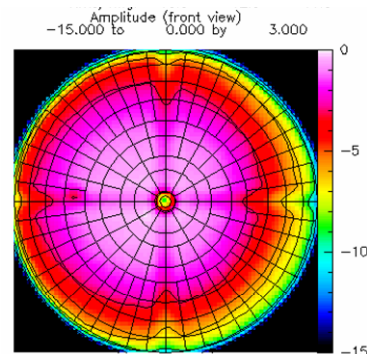
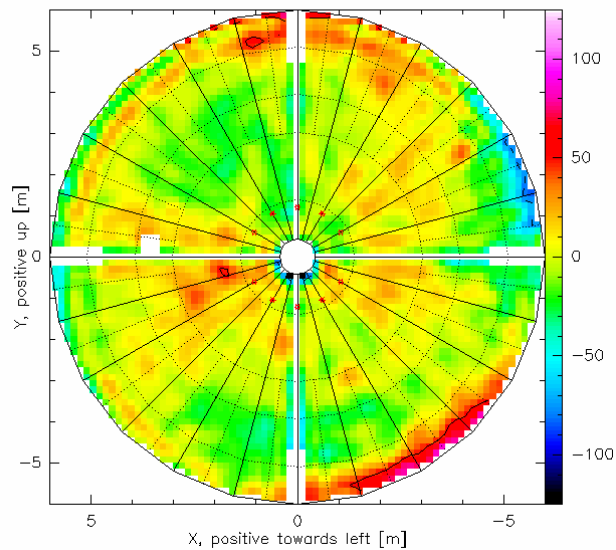
ALMA

Result file: DV02-ast

- Required panel motion towards focus (μm)
(positive number means a hole)
- map as seen from focus.

/users/rlucas/ASTROH0LO/DV01 DV02 DV03 DV05 PM03/20100604/

rms (unweighted) 20.15 μm
 rms (amp. weighted) 17.16 μm
 rms (12dB weighted, cos α included) 16.8 μm



DV05

rlucas@gns 09-JUN-2010 20:25:50

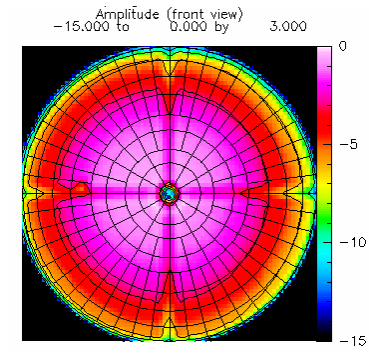
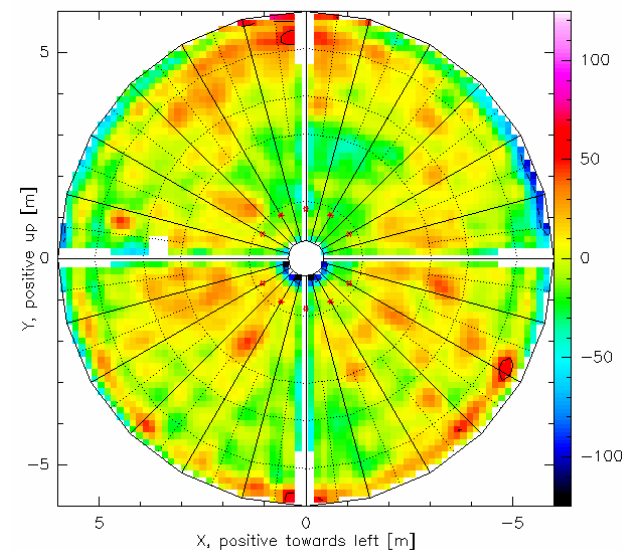
ALMA

Result file: DV05-ast

- Required panel motion towards focus (μm)
(positive number means a hole)
- map as seen from focus.

/users/rlucas/ASTROH0LO/DV01 DV02 DV03 DV05 PM03/20100604/

rms (unweighted) 20.28 μm
 rms (amp. weighted) 18.23 μm
 rms (12dB weighted, cos α included) 17.66 μm



PM03



uid A002 Xb574b X1 - uid A002 Xb574b X1 Far Field Grav: 20.0 90.0 No Temp
RF: Uncal. CLIC - 15-JUN-2010 16:22:40 - rlucas@gns - PM03 - ALMA/Vertex 12-m Antenna
Am: Rel.(B) Saturn OSF scans 1 to 1 07-JUN-2010 23:13UT El: 63.84
Ph: Rel.(B)
rms Pha. Edge taper = 13.56x 14.53 dB - offset X= -0.56 Y= -0.43 m
23 6.95 Focus offsets (X,Y,Z) = 0.29 0.12 0.64 mm; Astigmatism = 25.0 μm (89.0deg.)
Phase rms (unweighted)= 0.068 (weighted)= 0.064 radians
Surface rms (unweighted)= 19.28 - (weighted)= 18.22 μm
 η_A (84.243 GHz) = 0.828; η_A (230.0 GHz) = 0.807; η_A (345.0 GHz) = 0.777
S/T(84.243 GHz)= 29.465 Jy/K; S/T(230GHz)= 30.257 Jy/K; S/T(345 GHz)= 31.421 Jy/K
 η_I = 0.832 $-\eta_S$ = 0.776 $-\eta_P$ (84.243 GHz) = 0.996 $-\eta_P$ (230 GHz) = 0.970 $-\eta_P$ (345 GHz) = 0.934
Rms/ring: 21.6 11.7 11.6 14.7 16.1 17.4 18.4 24.6
Amplitude (front view) Normal errors (front view)
-15.000 to 0.000 by 3.000 -125.000 to 125.000 by 50.000

